

Dimensions

Window and door width and height dimensions should be on an 8" design module (see chart below). Windows and door openings that are not listed below will require some cutting of block. The amount of cutting is determined by these variables; how large of an opening, and whether it is the width, or the height that is not in 8" block dimension. The width dimension is more critical than the height.

WIDTH OPTIONS	
	14 20 28 34 40 48 54 60 68 74 80
HEIGHT OPTIONS	14
	20
	28
	34
	40
	48
	54
	60
	68
74	
80	

The opening can be any one of these combinations without requiring any cuts in the block.

Helpful Design Hint

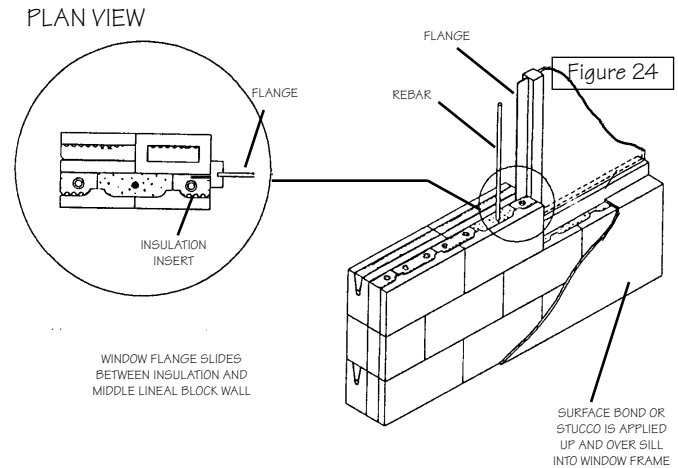
Only three combinations of numbers work for 8" block module design:

- any even number: 20, 40, 60, 80...
- any even number plus 8": 28, 48, 68, 88...
- any odd number plus 4": 14, 34, 54, 74...

Aluminum / Vinyl Windows

Flanged windows (the same that would be used for wood frame) with 8" masonry dimensions are recommended. **Very important:** actual frame-to-frame window dimensions should be 1/2" to 3/4" under rough opening size which is standard for most aluminum and vinyl window manufacturers.

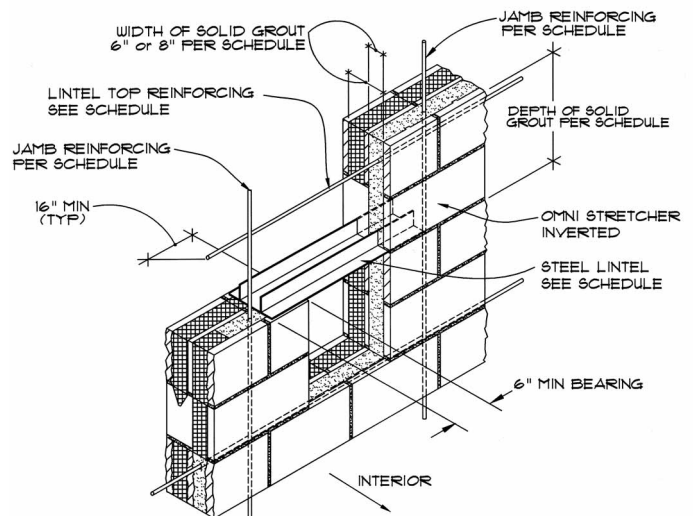
Aluminum and vinyl windows are installed while the block is being erected (see Figure 24). The top and bottom flanges are removed. The window is then installed from the top and slid into place between both jambs. No screws or clips are required because the surface bond or stucco when applied will cement them into place. The windows should be ready for job site delivery when the block construction begins. The windows are usually installed just before the lintels are set and grouted. Therefore, actual delivery will depend upon the size of job. The mason should communicate to the builder the timing of the window delivery in order to avoid delays.



ALUMINUM / VINYL FLANGED WINDOWS

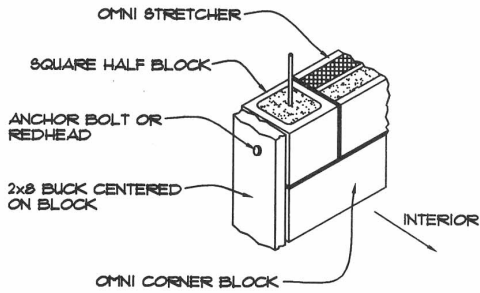
Figure 25 illustrates the window opening detail when utilizing windows with flanges and stucco (interior and exterior).

Figure 25



WINDOW / DOOR LINTEL DETAIL

Figure 26



WINDOW / DOOR BUCK AT JAMBS

Wood Frame Windows

The mason does not install wood frame windows. When utilizing woodframe windows, utilization of a flange is not permitted because the windows are installed much later in the building process. Wood frame window standard sizing is usually not block friendly (8" module). Therefore, they usually require wood fillers or wood bucking material around the block opening. Figure 26 shows a typical wood buck option. When the window size and buck sizing are properly dimensioned to fit into standard 8" block module, the window installation is no more difficult than standard installation practices.

Wood Frame Window Installation

The 2 x 8 wood bucking should be centered (see Figure 26) and should have the same set-back around the opening. Depending upon window manufacturer dimensions, a plywood filler may be added to the buck. The filler width should match the buck width. When properly bucked, there should be an even reveal around window casing and/or on both sides of door jamb which will enable the drywaller to evenly finish the interior and the stucco subcontractor to finish the exterior. The windows are set and installed per manufacturer's instructions.

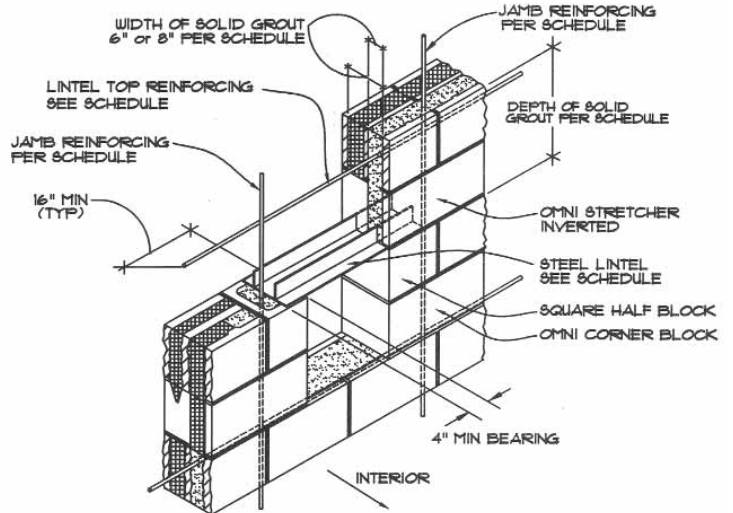
Exterior Doors and Sizing

The mason does not install doors. Exterior doors are installed later in the construction process. The rough opening for most doors is two inches greater than the actual door size. Therefore, a 2'6" door plus 2" is a standard width block opening of 2'8" (see Chart for options) and is ideal. In the case of a 3'0" door, a 3'4" block opening is provided and a 2 x 8 wood buck is all that is required to properly finish. Any door height can be accommodated in the same fashion.

Exterior Slider Doors and Installation

The mason does not install slider doors. Consult the door manufacturer for rough opening requirements. Most metal frame slider openings are standard masonry dimensions. The installer should use Tapcon (or equal) masonry screws to anchor door frame to block jamb (see Figure 27).

Figure 27



WINDOW / DOOR LINTEL DETAIL

Builder's Checklist

- During design, make sure all window openings are block module, if possible. Use the handy sizing Chart, if necessary.
- Prior to ordering windows, send a copy of planned window schedule to the mason to assure proper window dimensioning.
- Order aluminum or vinyl windows sometime during pre-slab, allowing enough lead time so that when slab is done the windows are ready to be delivered.
- Order aluminum or vinyl windows 1/2" to 3/4" under rough opening when utilizing flange installation technique.
- Communicate with mason for actual delivery date.
- Communicate to mason door and/or slider widths and heights so proper rough opening can be provided.
- If using wood frame windows, determine window sizing and bucking options and communicate them to the mason and the window installer.