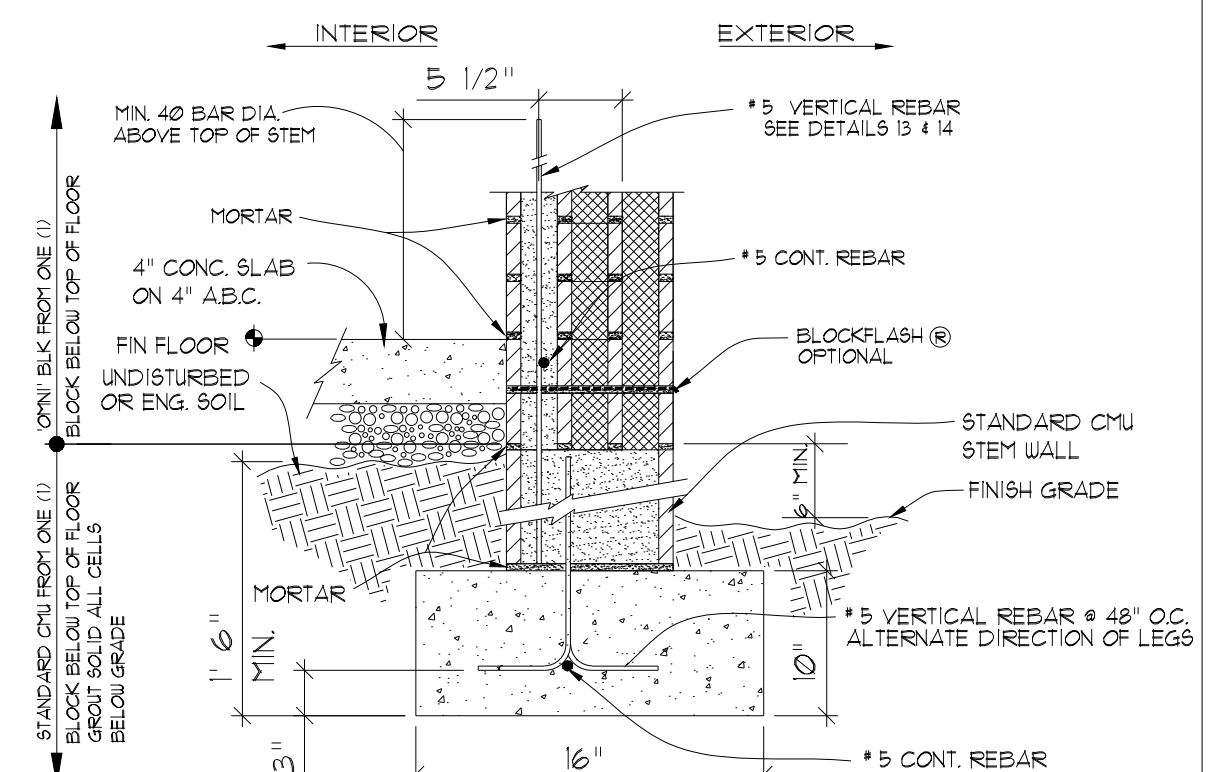
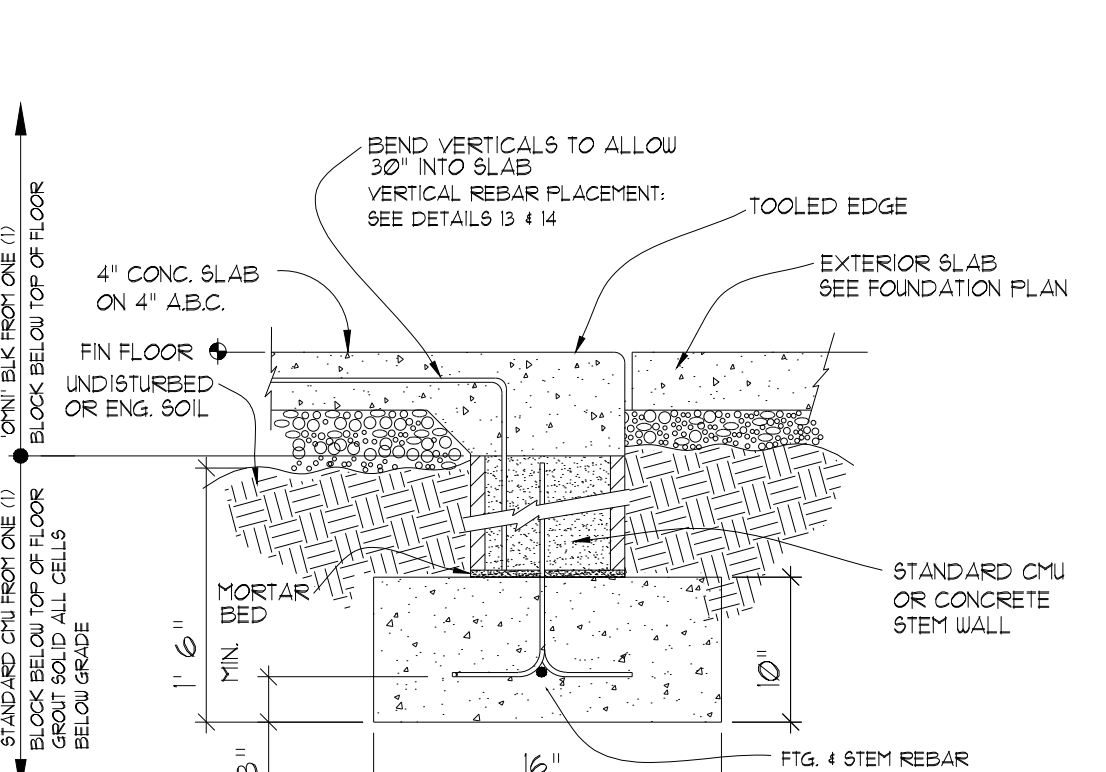


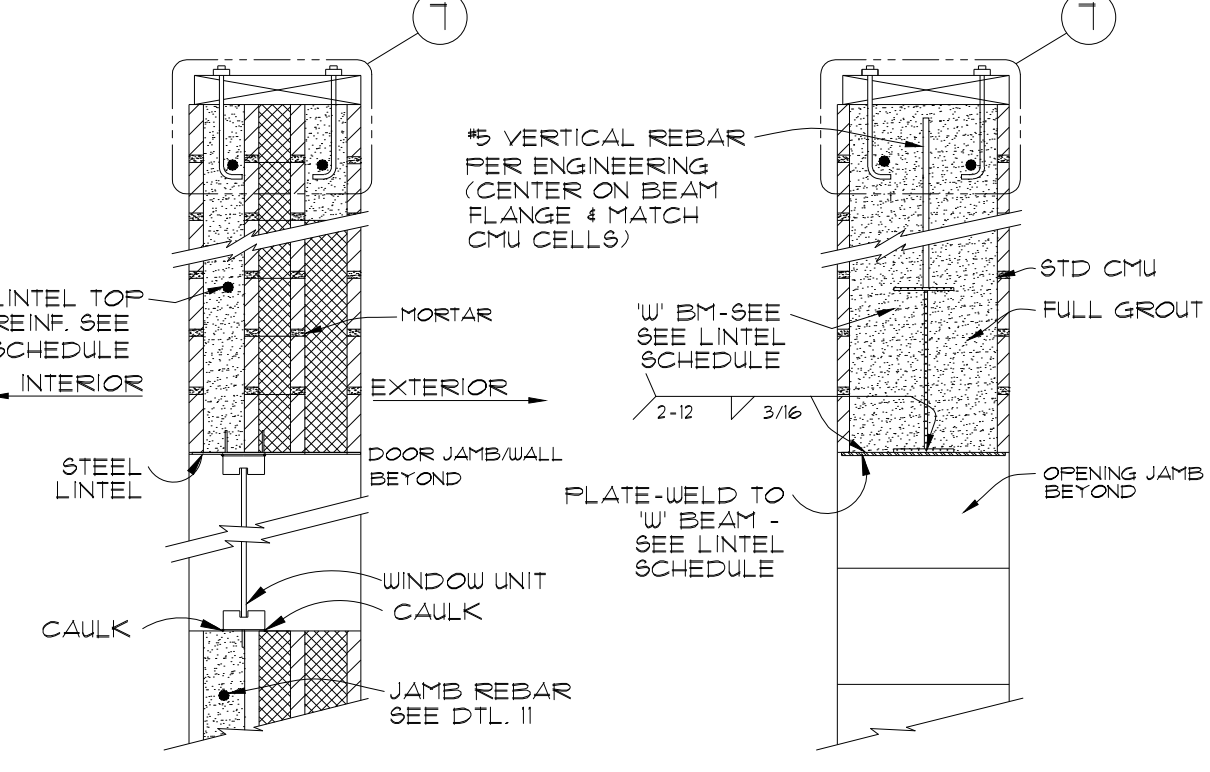
1 EXTERIOR WALL FOOTING - CONCRETE STEM SCALE: NTS



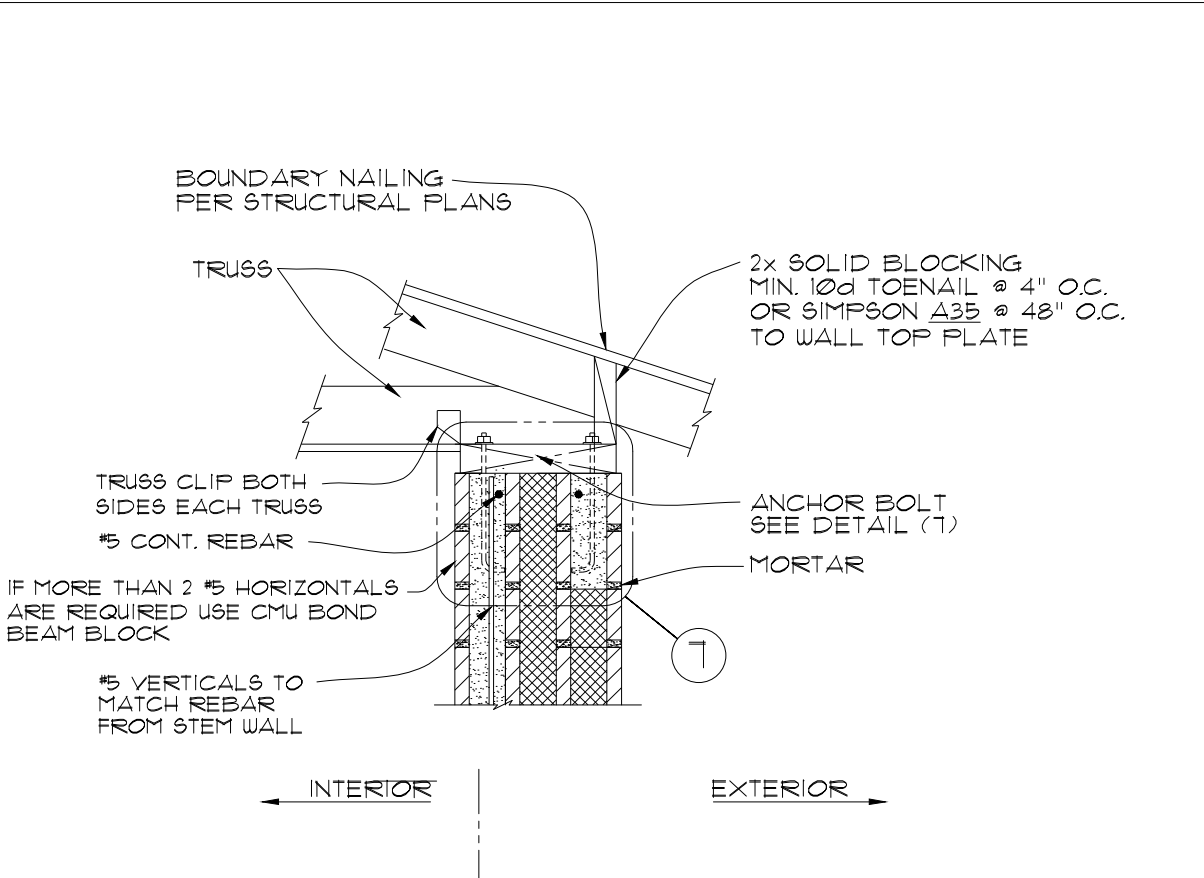
1A EXTERIOR WALL FOOTING - CMU STEM SCALE: NTS



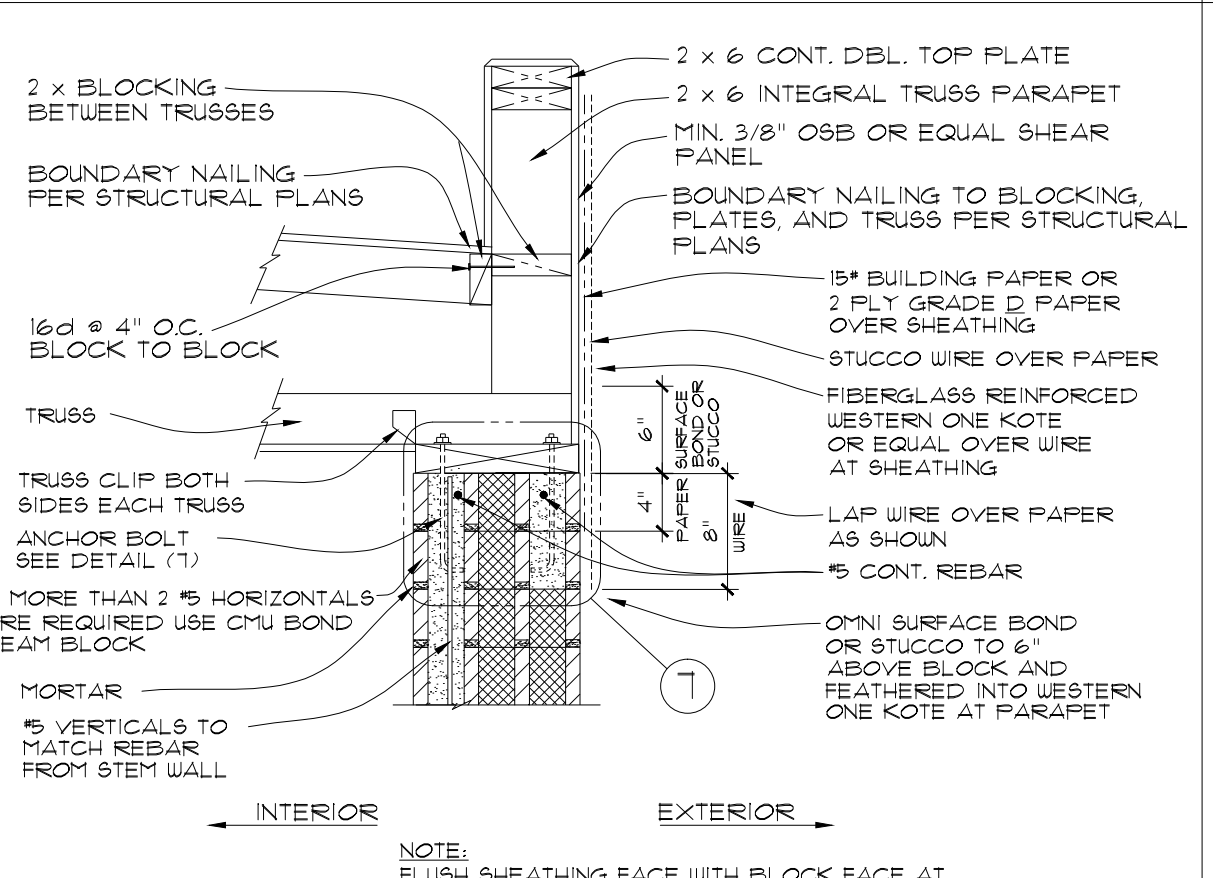
2 DEPRESSED STEM @ OPENING SCALE: NTS



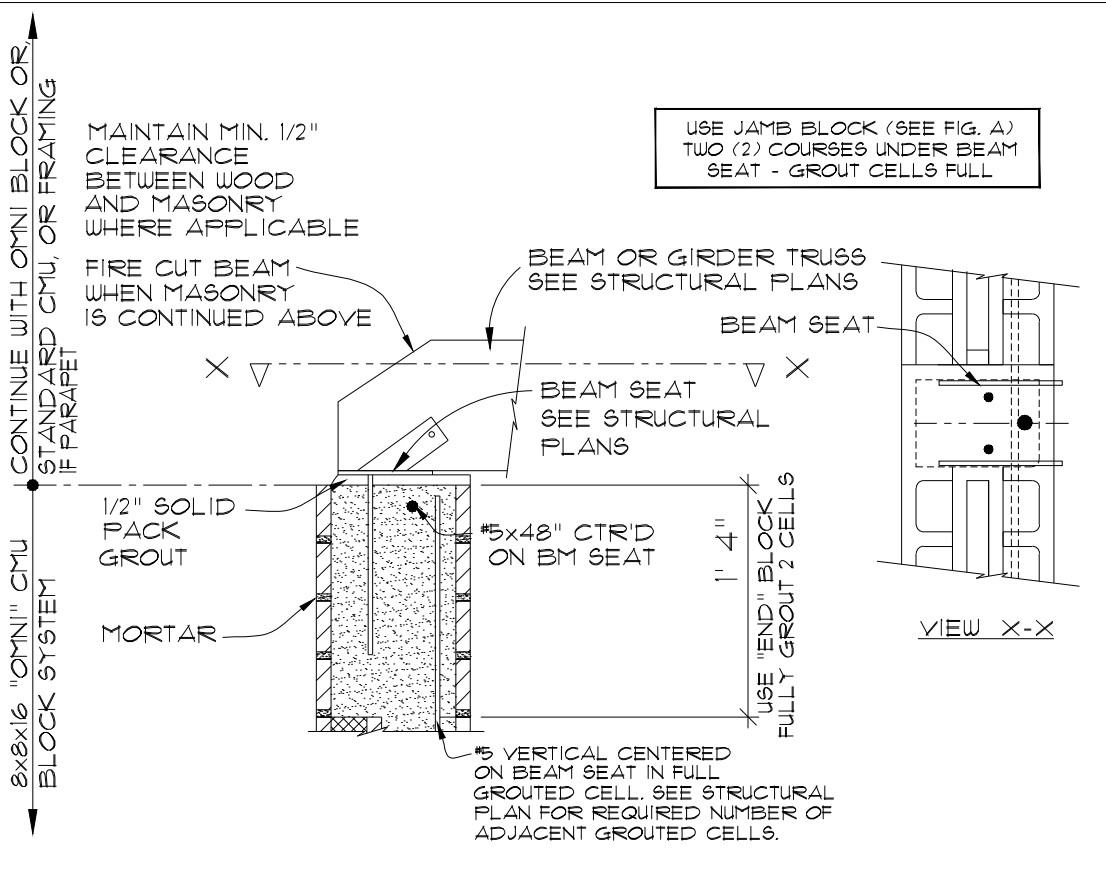
3 TYPICAL LINTEL @ W' BEAM (WHEN USED) SCALE: NTS



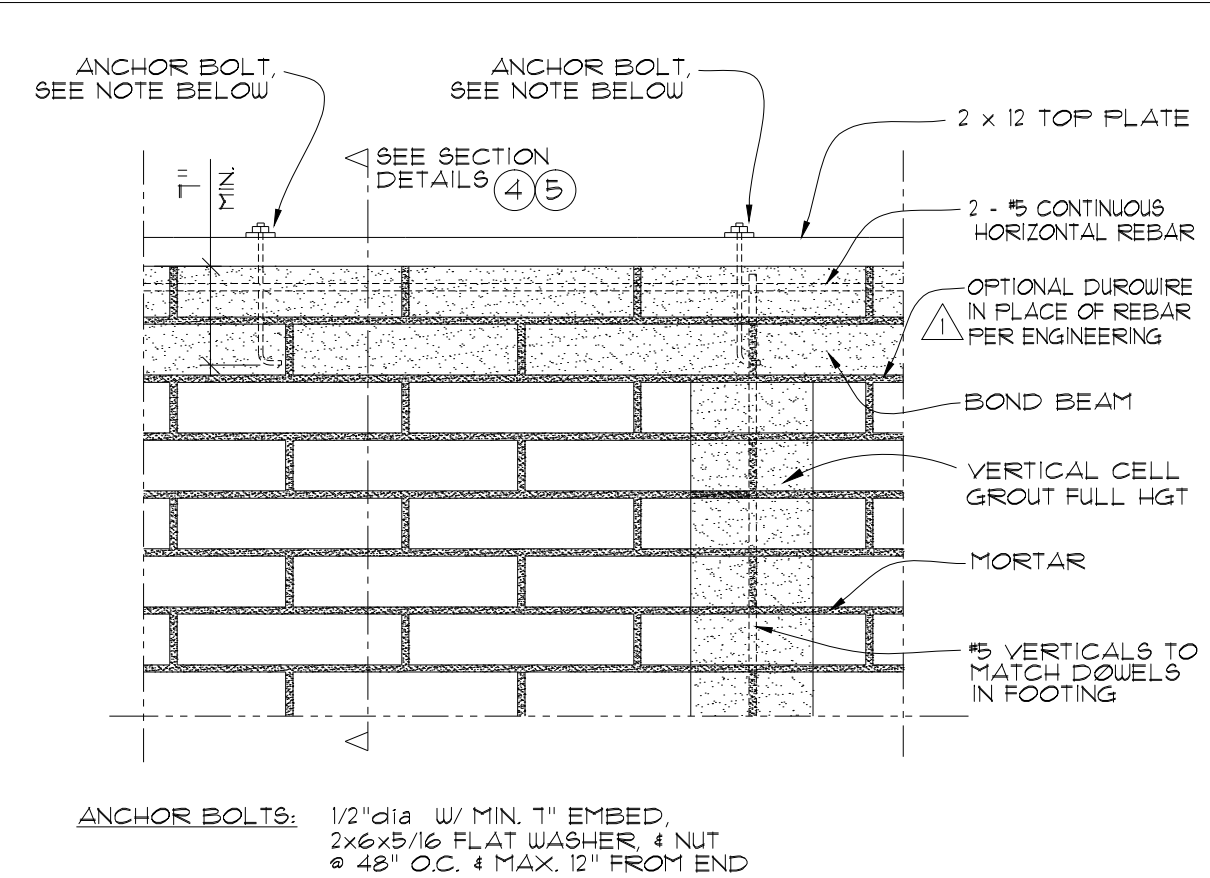
4 BOND BEAM - WITH ROOF TRUSS & EAVE SCALE: NTS



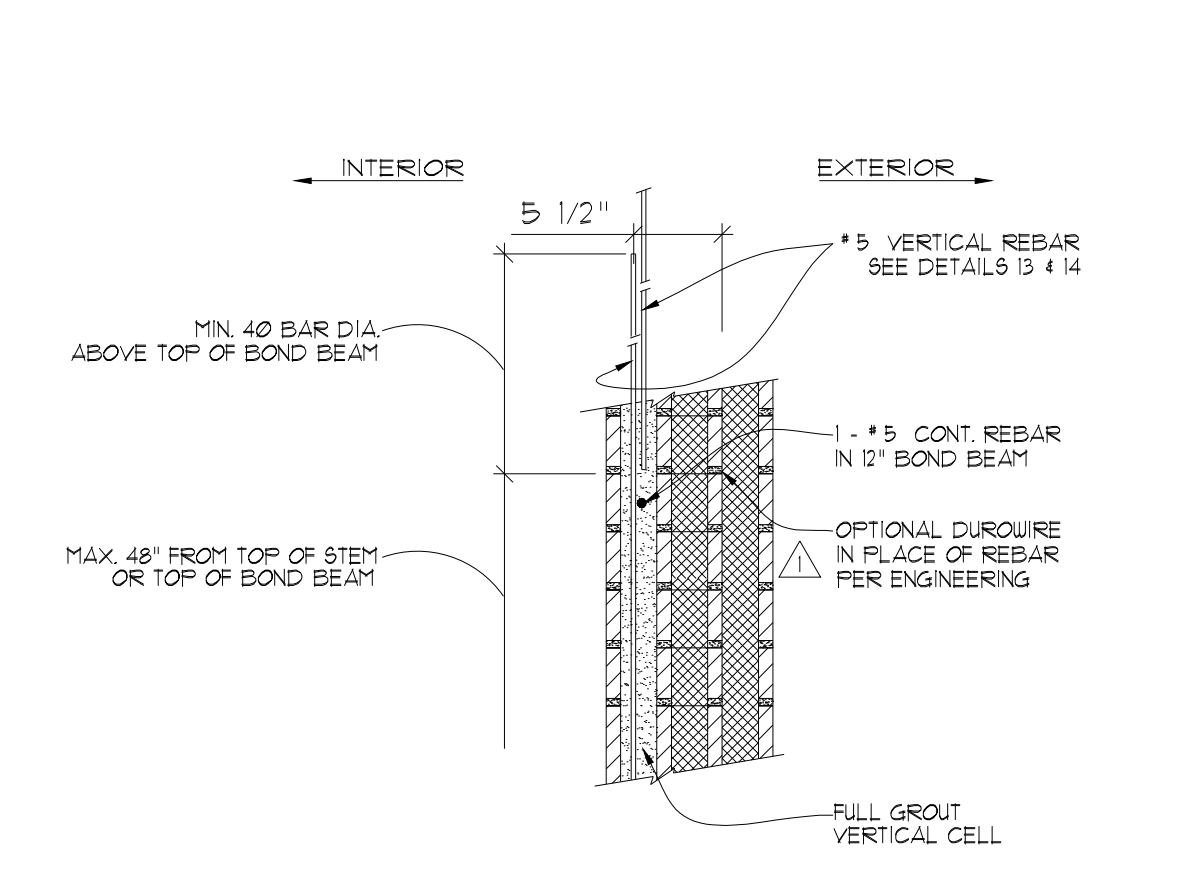
5 BOND BEAM - WITH ROOF TRUSS PARAPET SCALE: NTS



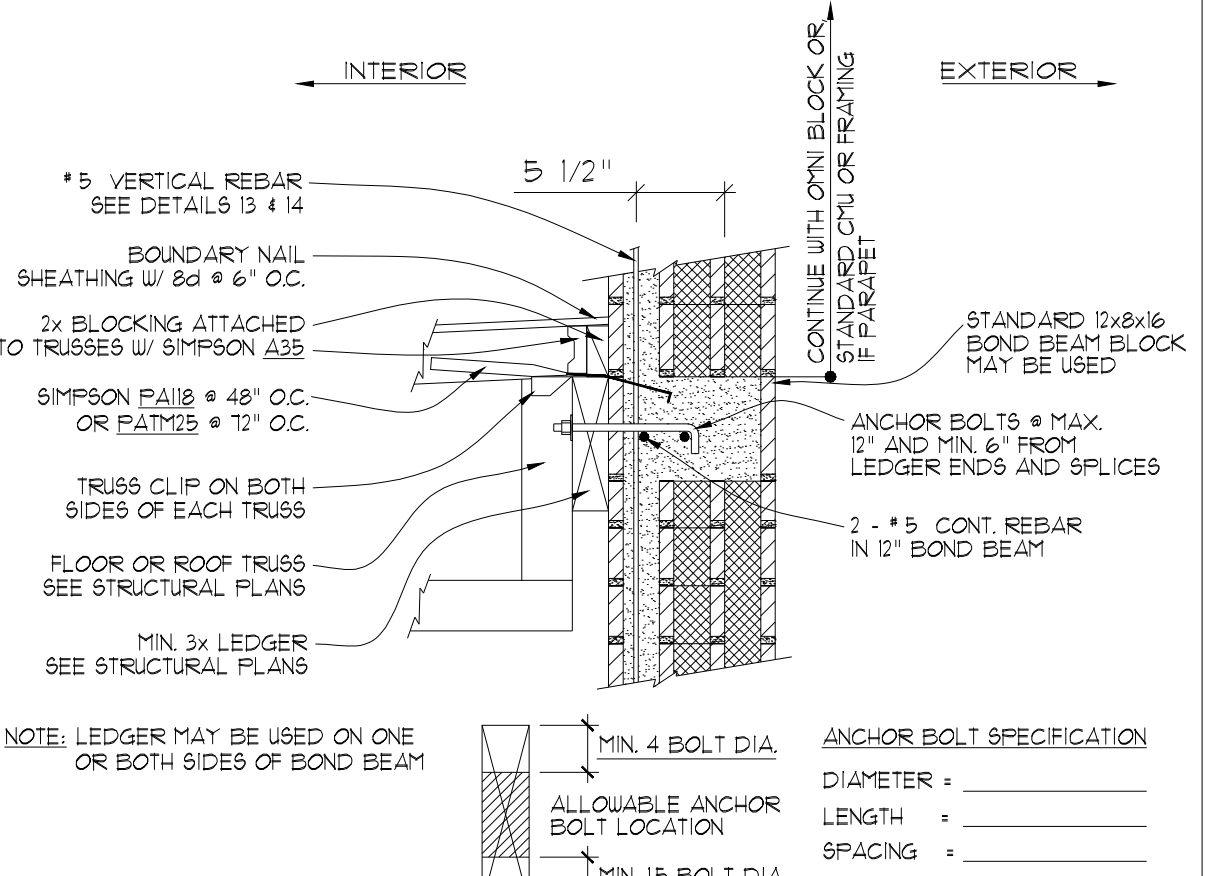
6 BEAM OR TRUSS @ CMU SCALE: NTS



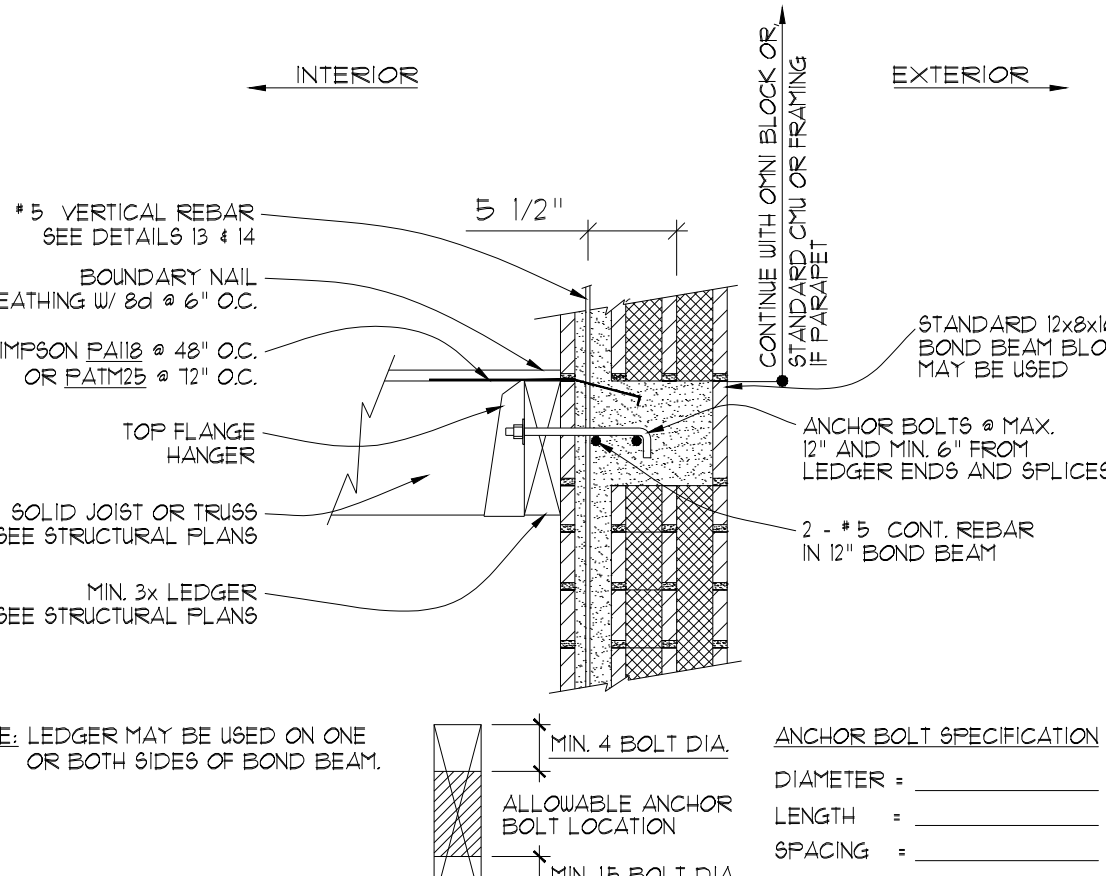
7 WALL TO ROOF / ANCHOR PLATE SCALE: NTS



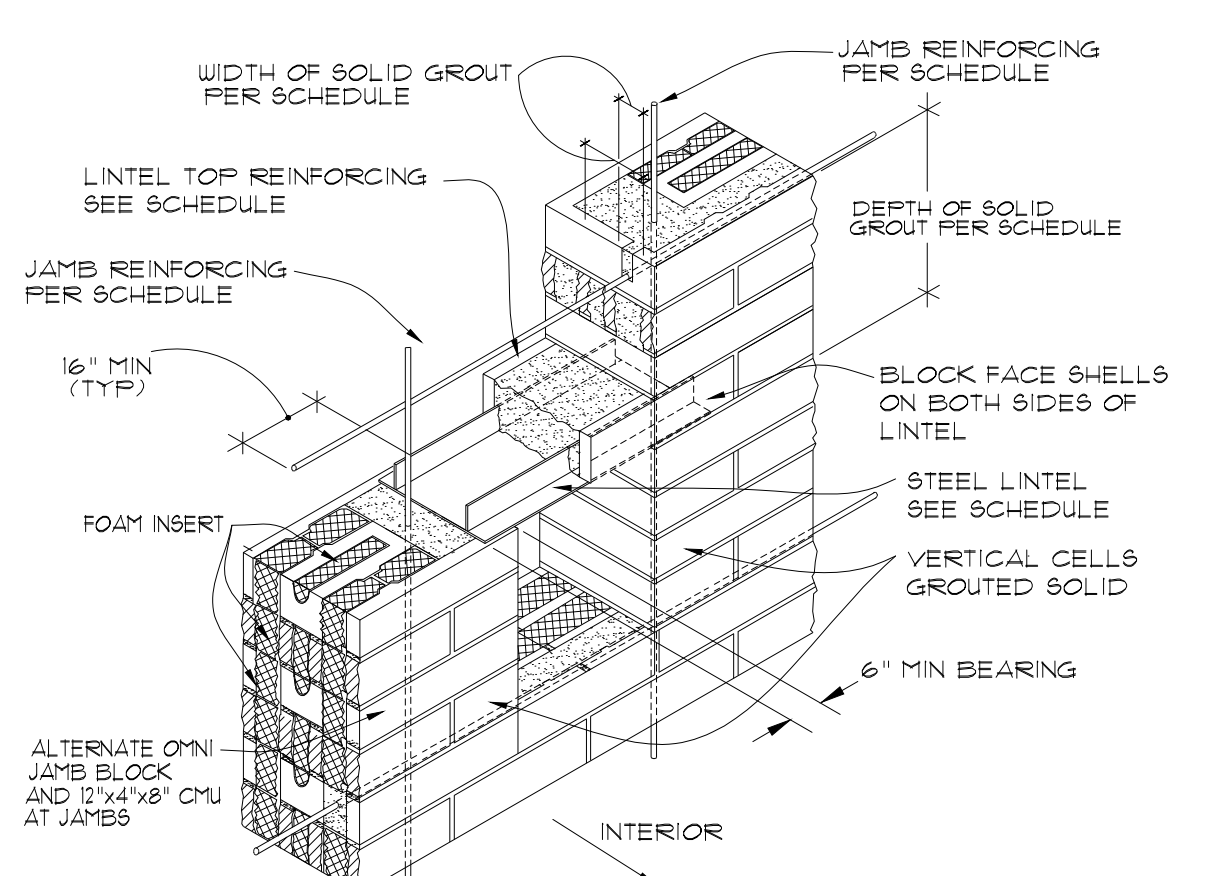
8 BOND BEAM - MID WALL SCALE: NTS



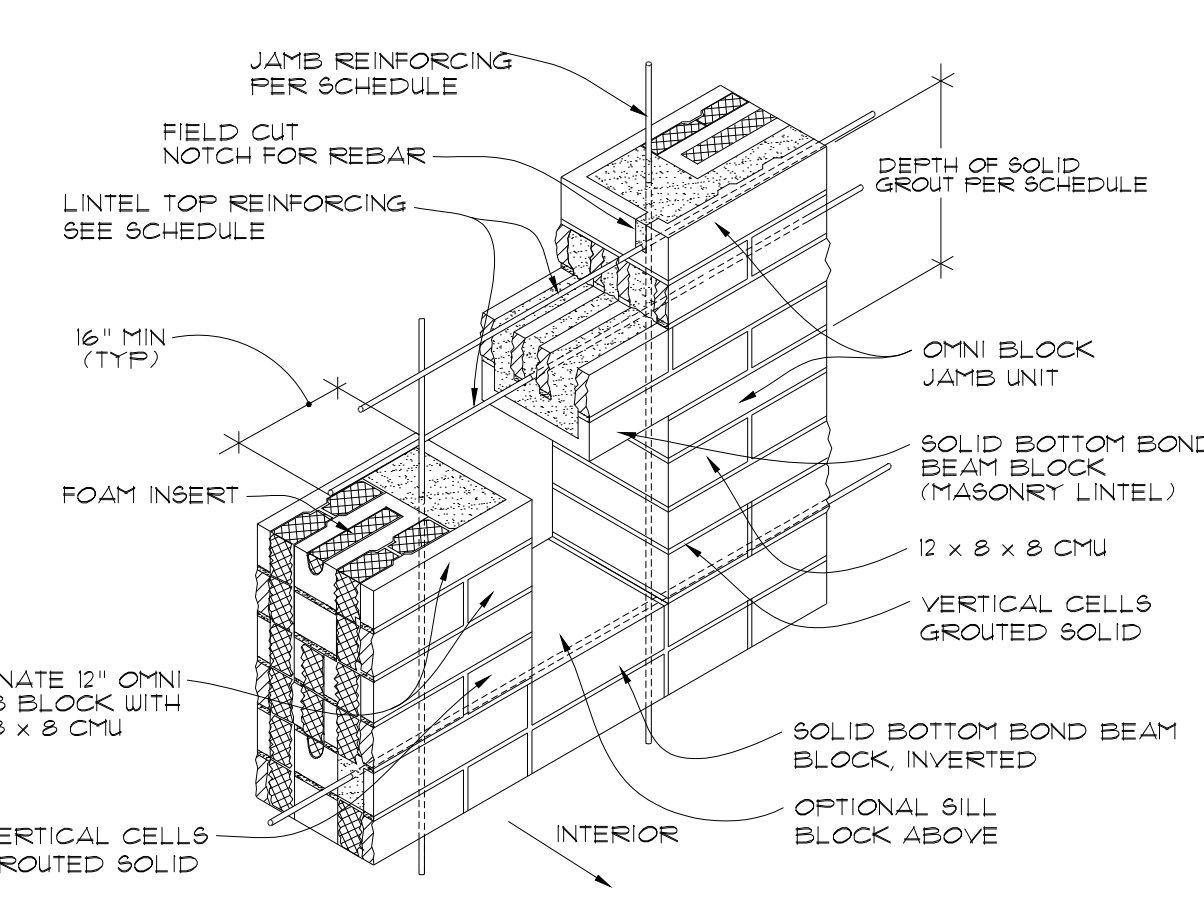
9 LOAD BEARING LEDGER WITH TRUSS TOP CHORD SUPPORT SCALE: NTS



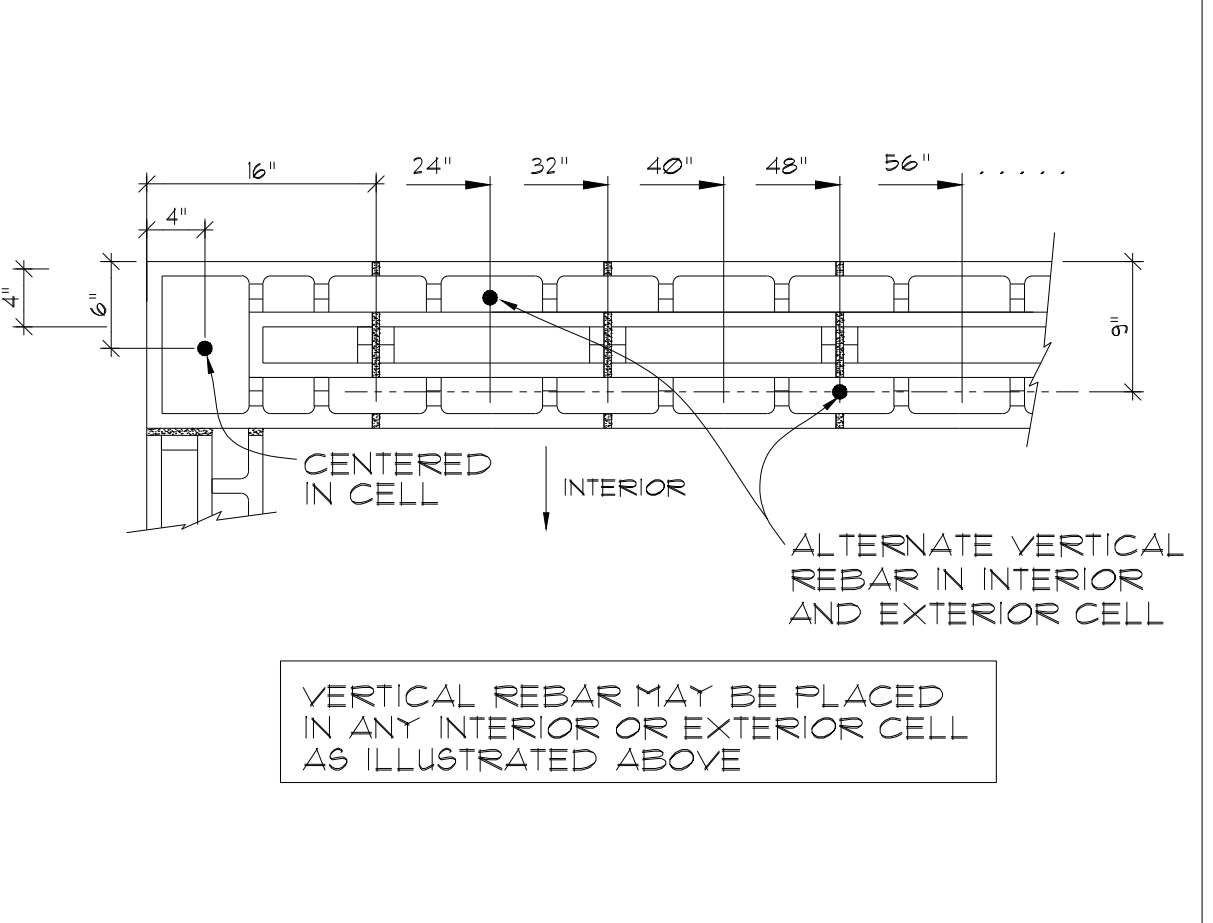
10 LOAD BEARING LEDGER WITH JOIST HANGER SCALE: NTS



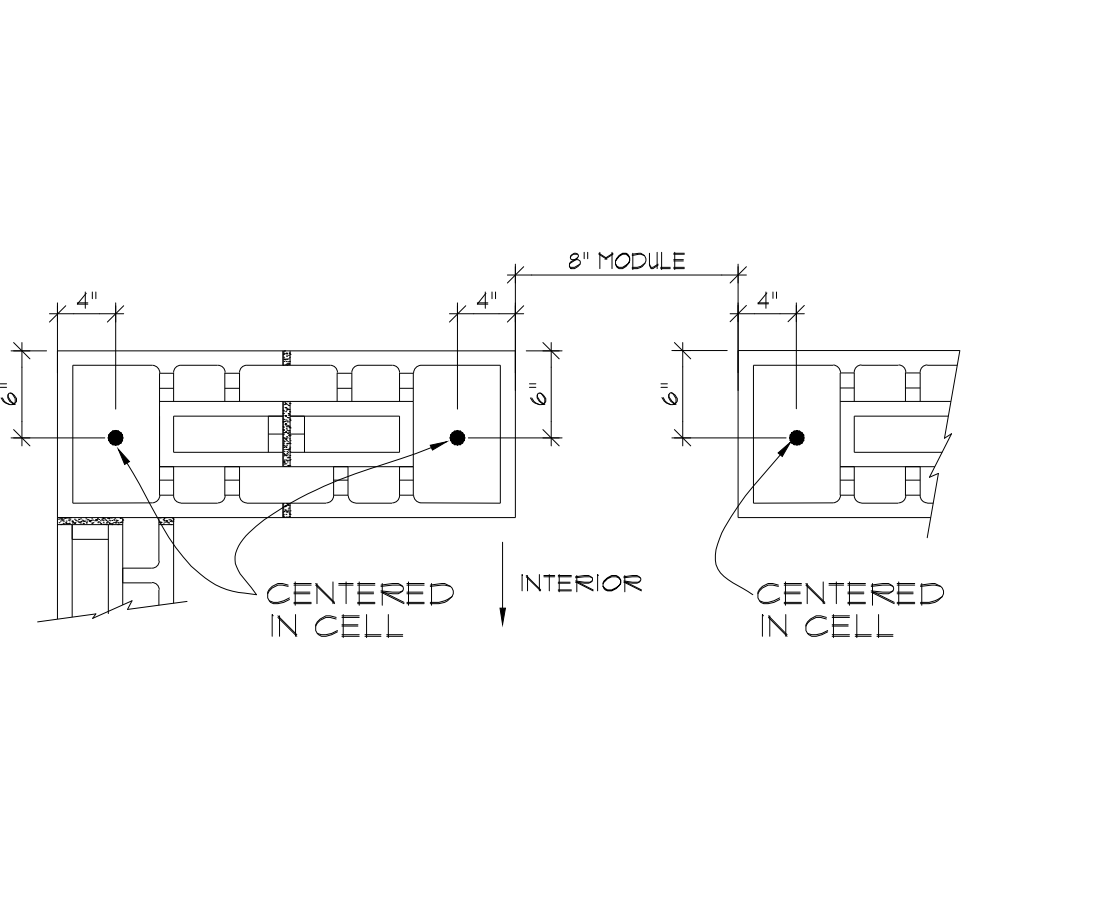
11 WINDOW / DOOR LINTEL DETAIL SCALE: NTS



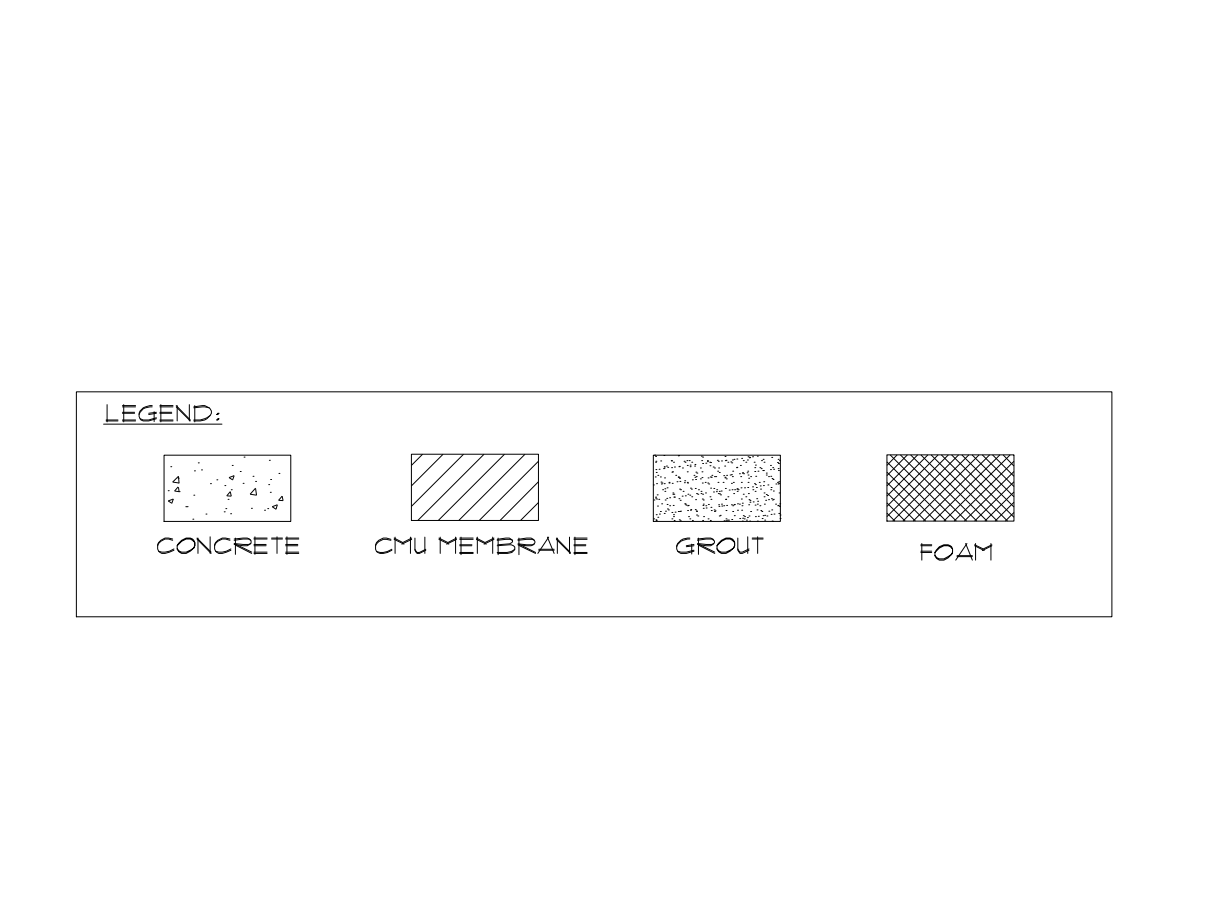
12 WINDOW/DOOR SILL AND LINTEL FOR EXPOSED CMU SCALE: NTS



13 REBAR PLACEMENT - STANDARD WALL SCALE: NTS



14 REBAR PLACEMENT AT WINDOW & DOOR OPENINGS SCALE: NTS



15 LEGEND SCALE: NTS

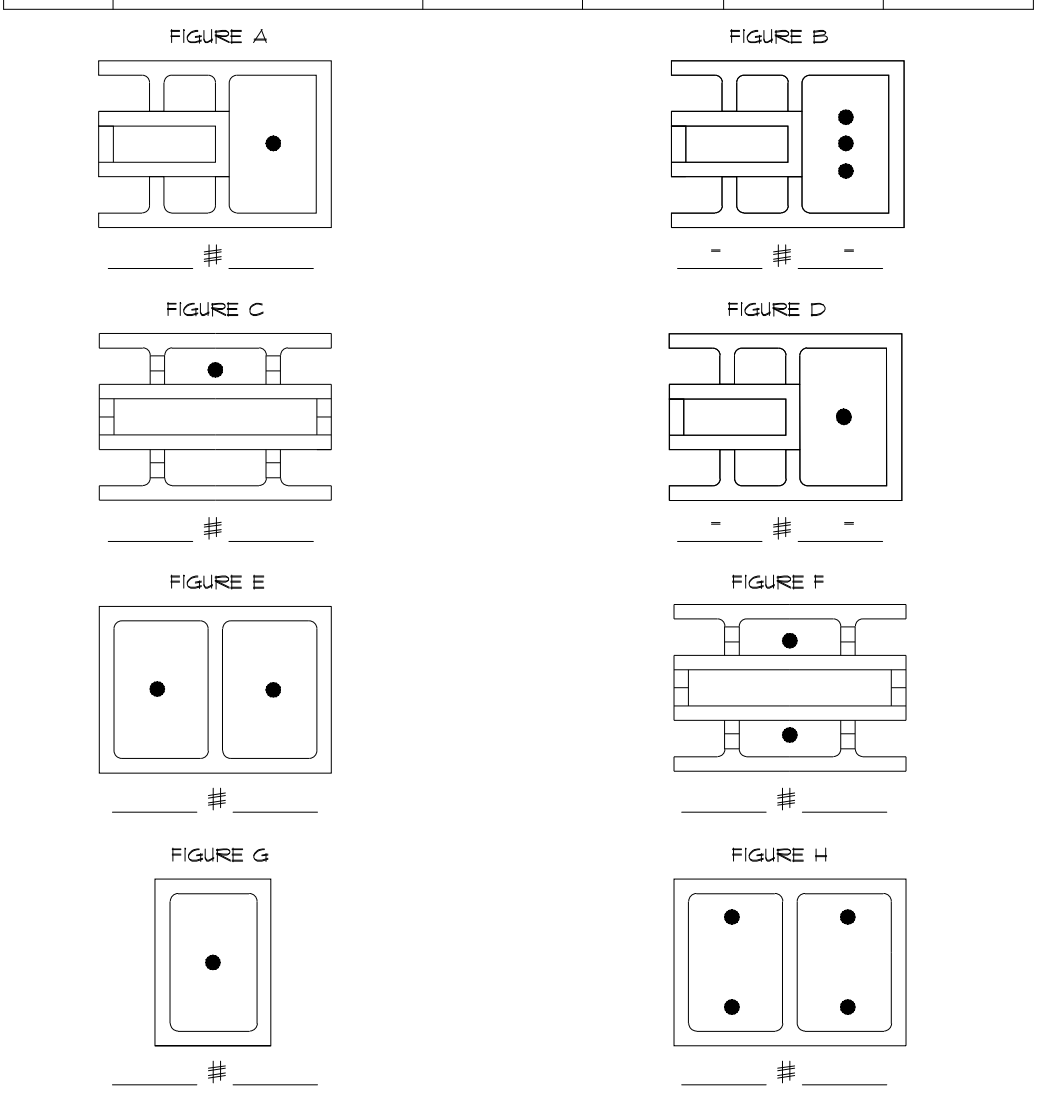
JOB SPECIFICATIONS
OMNI BLOCK ENGINEERING SUMMARY SHEET

GRADE OF STEEL: 40 GROUT: 2000 PSI MORTAR: TYPE _____

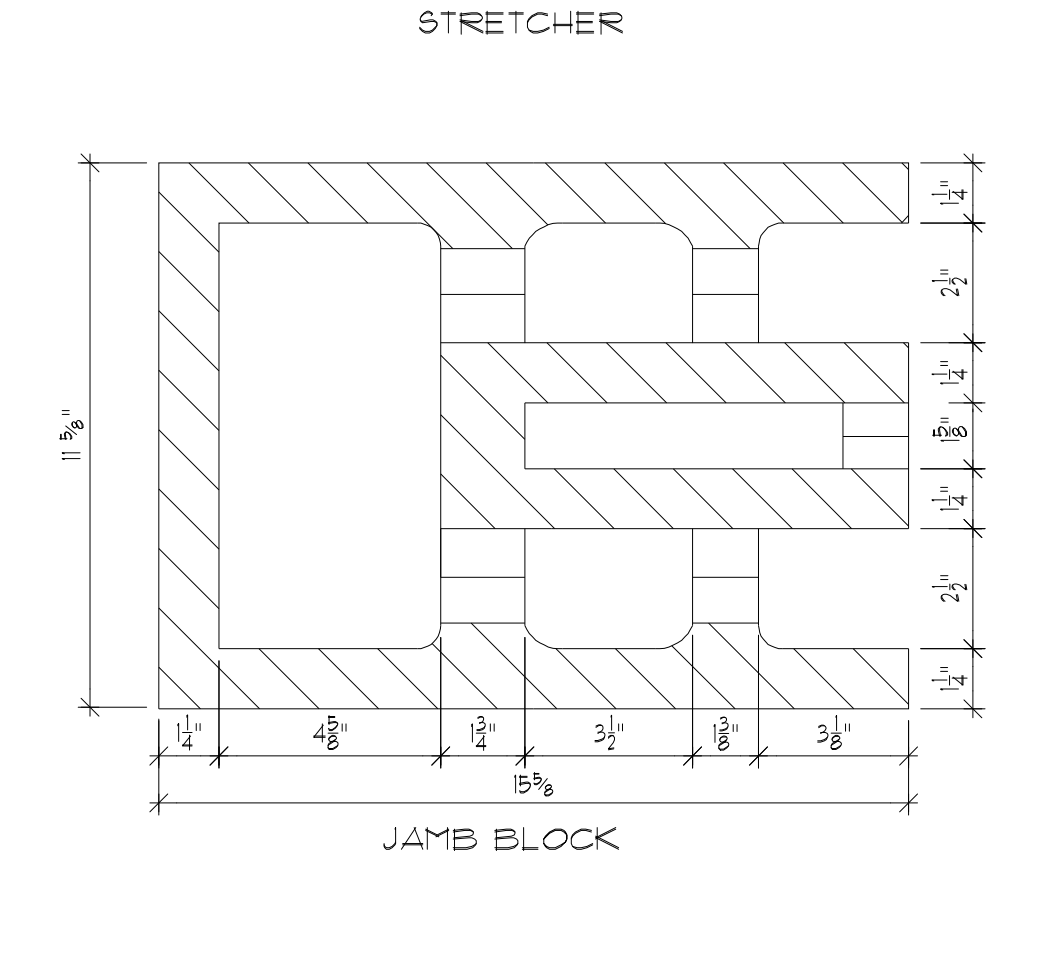
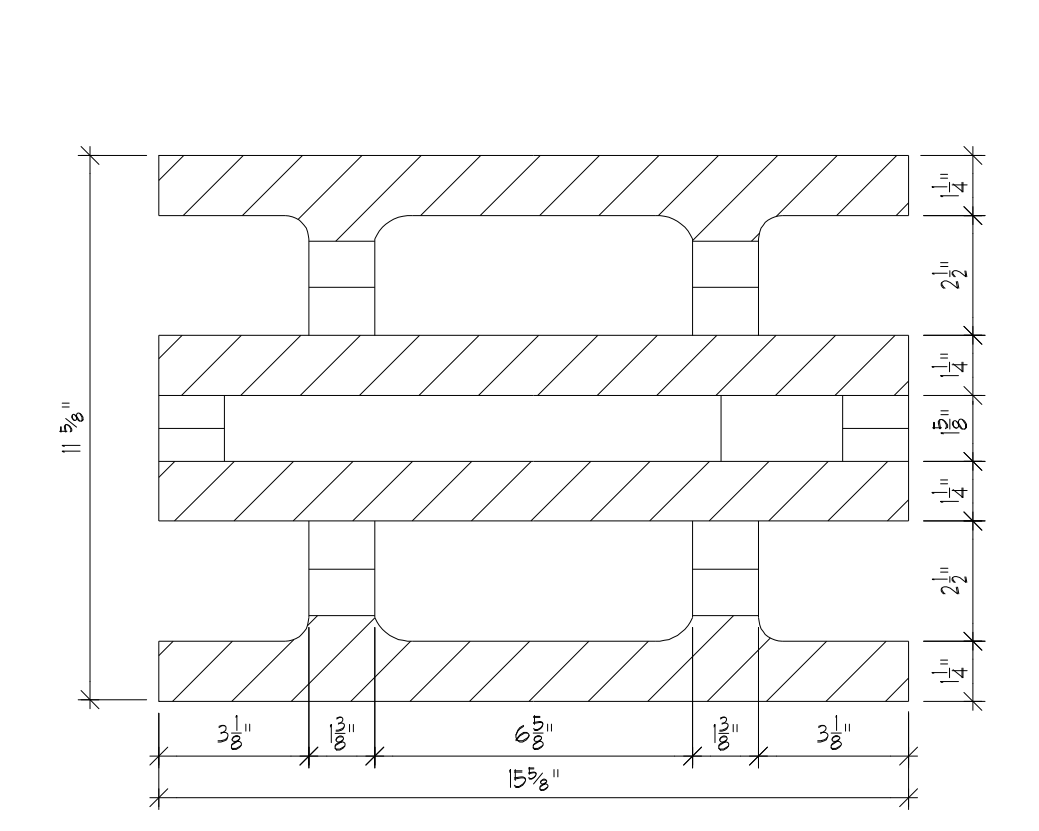
WALL HEIGHT	VERTICAL STEEL		BOND BEAM'S		TOP OF WALL		TOP OF STEM	
	QTY.	#	QTY.	#	QTY.	#	QTY.	#

LINTEL SPECIFICATIONS

Mark	TYPE	SHEAR STEEL	TOP STEEL	GROUT WIDTH	FIGURE (LETTER)



16 UNLESS NOTED OTHERWISE, ALL CMU ARE 'OMNI' SYSTEM. VERIFY ALL DETAILS AGAINST ENGINEERING CALCULATIONS. SCALE: NTS



17 BLOCK DETAIL 9/203 NTS

Omni Block
AN INSULATED CONCRETE BLOCK

WWW.OMNIBLOCK.COM
5940 S. Rainbow Blvd #1003, Las Vegas, NV 89118
Tel/Fax: (811) 711-OMNI (6664)
info@omniblock.com

OMNI BLOCK - 12" x 4" x 16" STANDARD DESIGN DETAILS

REVISIONS:

NO.	DATE	BY:
△ 6/15/01	V 12.1	TAD
△ 7/10/03	V 12.2	JR
△ 9/25/13	V 12.3	JR

BY: TAD
CHECKED BY: DRM
DATE: 9/25/13
FILE: S-1203-PLT

SHEET
S12.3