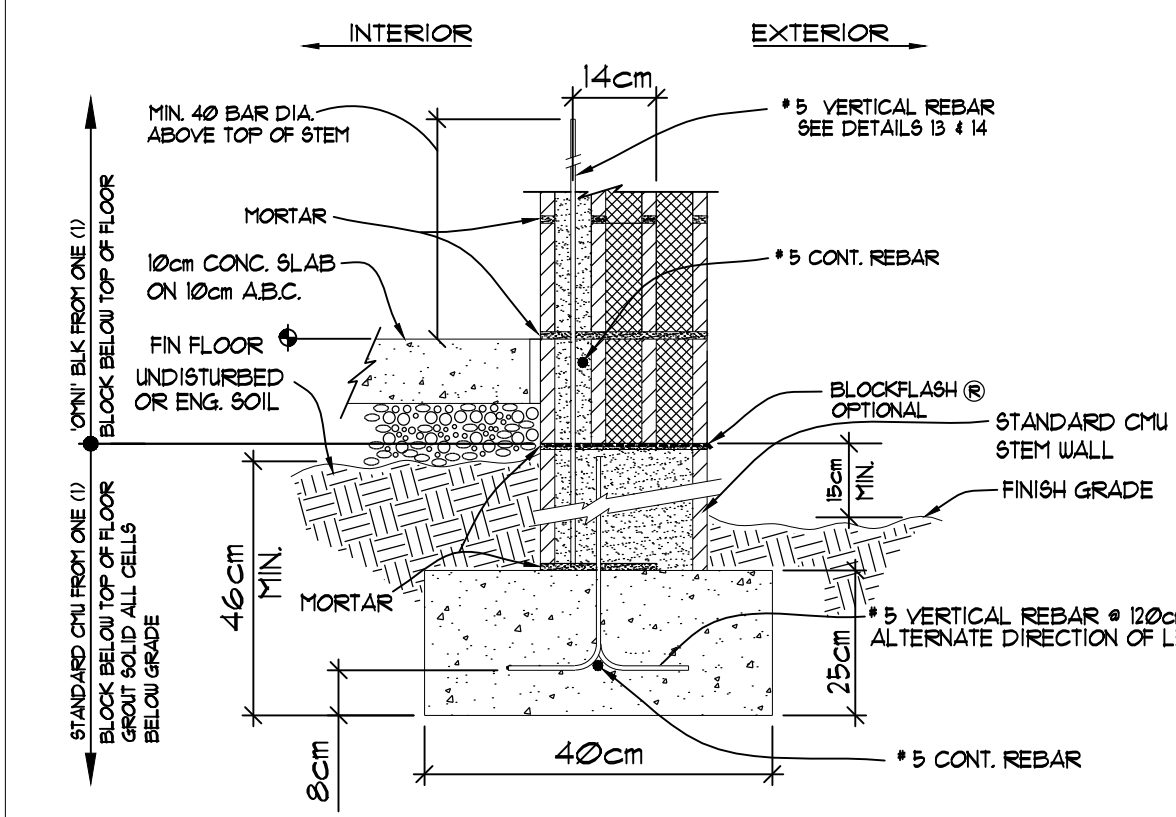
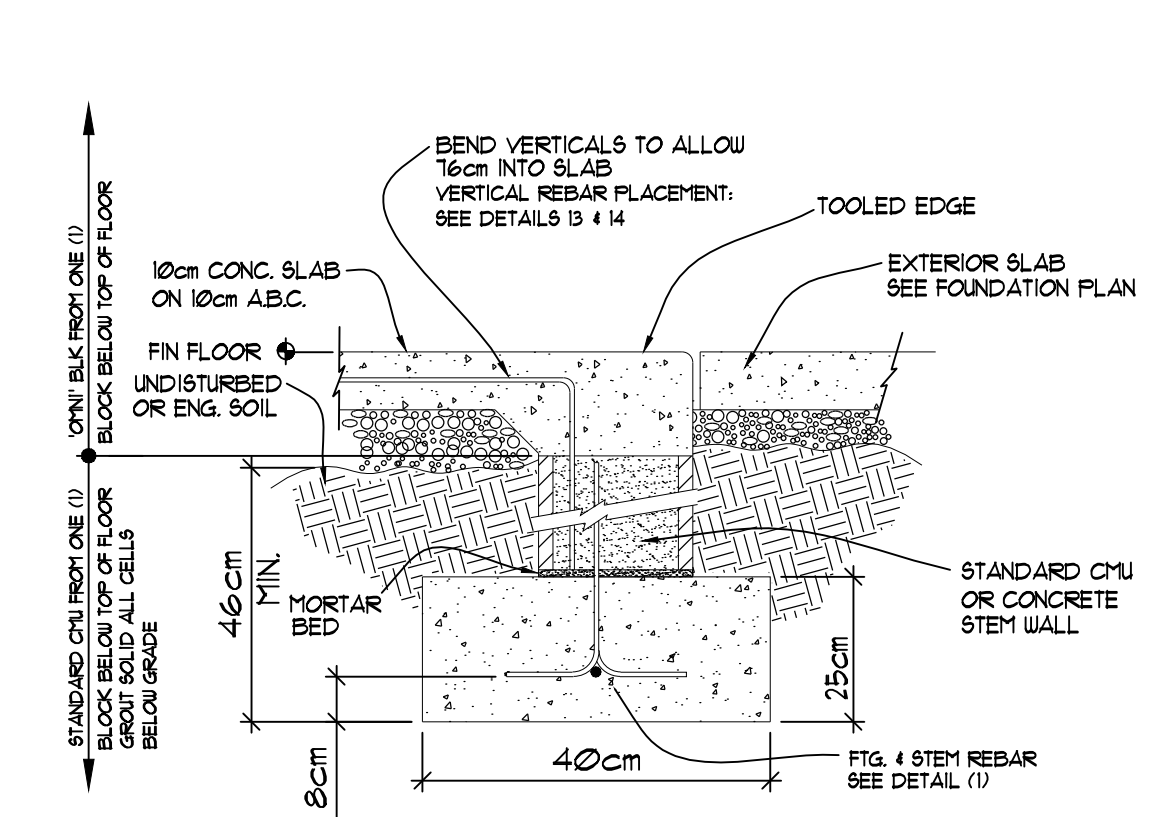


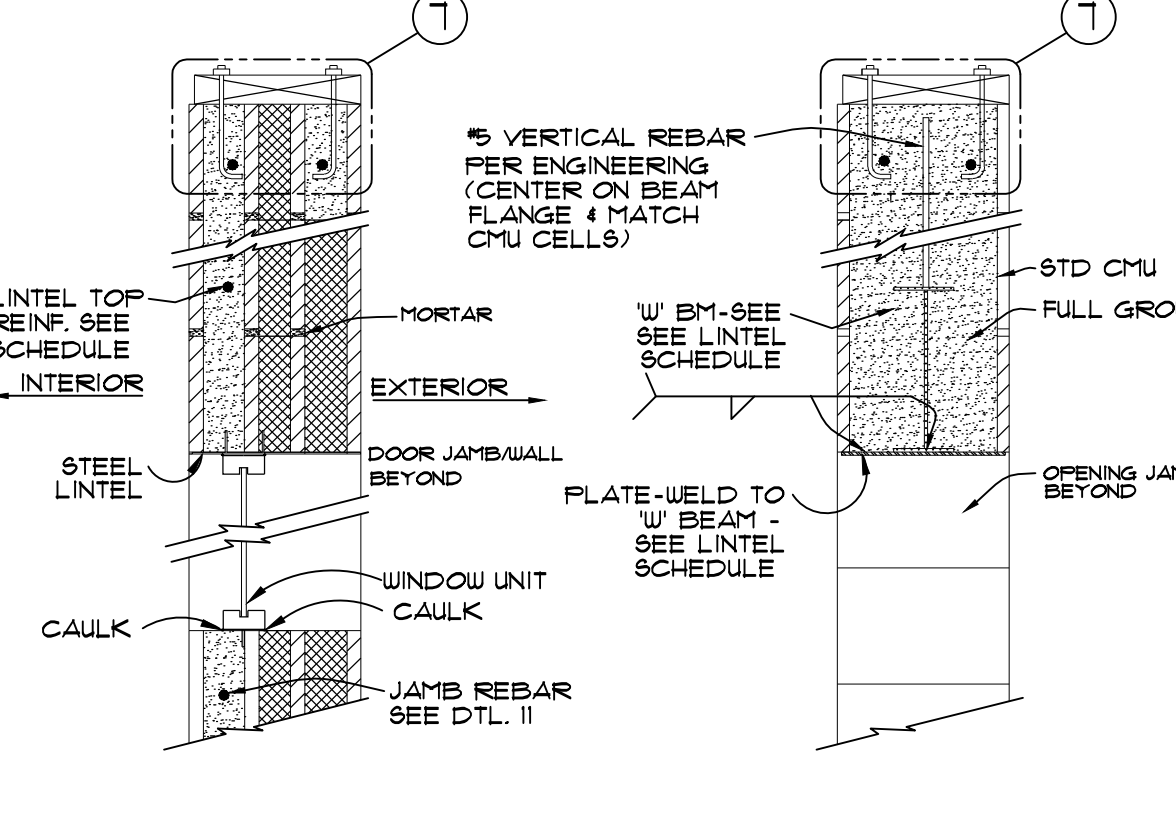
1 EXTERIOR WALL FOOTING - CONCRETE STEM SCALE: NTS



1A EXTERIOR WALL FOOTING - CMU STEM SCALE: NTS



2 DEPRESSED STEM @ OPENING SCALE: NTS



3 TYPICAL LINTEL @ SCALE: NTS

JOB SPECIFICATIONS
OMNI BLOCK ENGINEERING SUMMARY SHEET

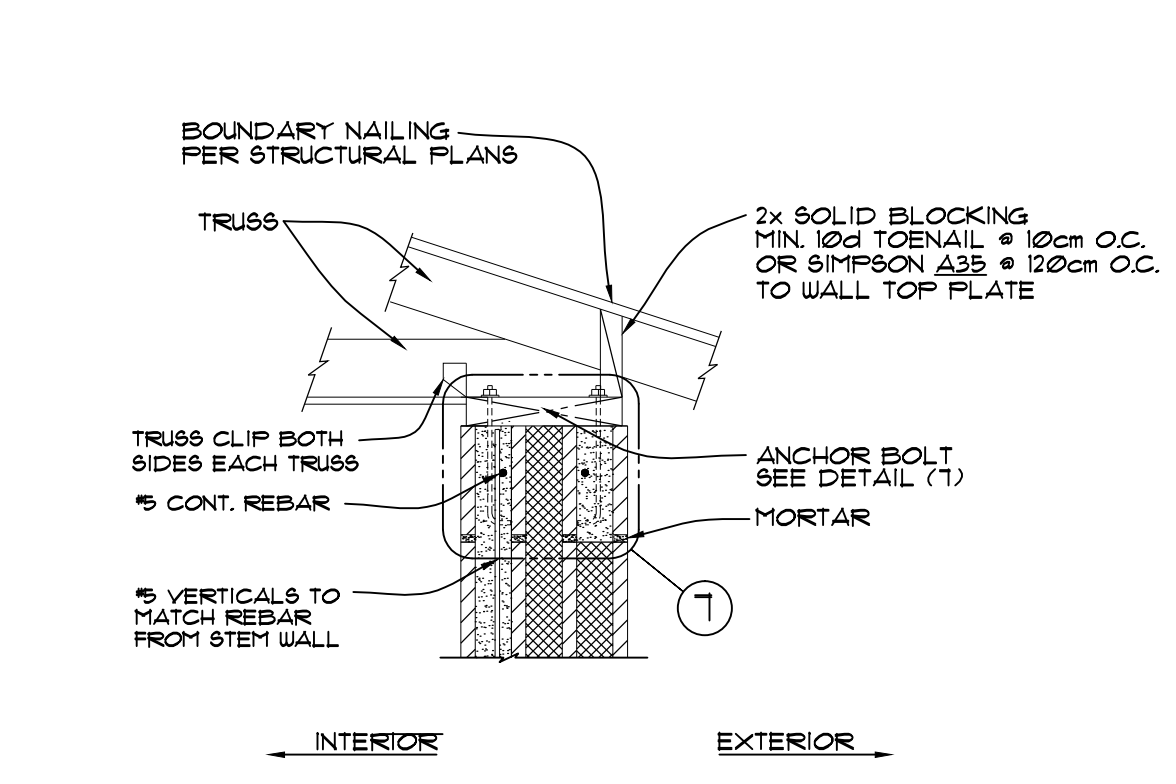
GRADE OF STEEL: 40 GROUT: 2000 psi MORTAR TYPE _____

REINFORCEMENT SCHEDULE:

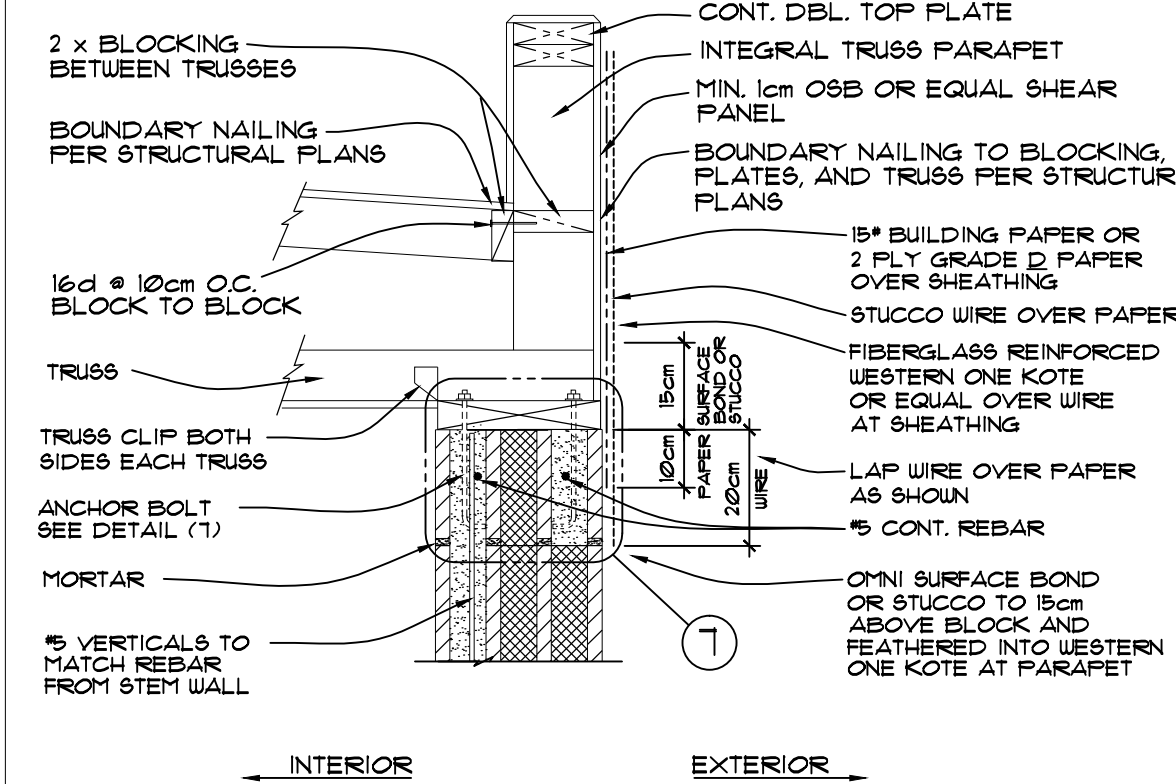
WALL HEIGHT	VERTICAL STEEL		BOND BEAM'S		TOP OF WALL		TOP OF STEM	
	QTY.	•	QTY.	•	QTY.	•	QTY.	•

LINTEL SCHEDULE:

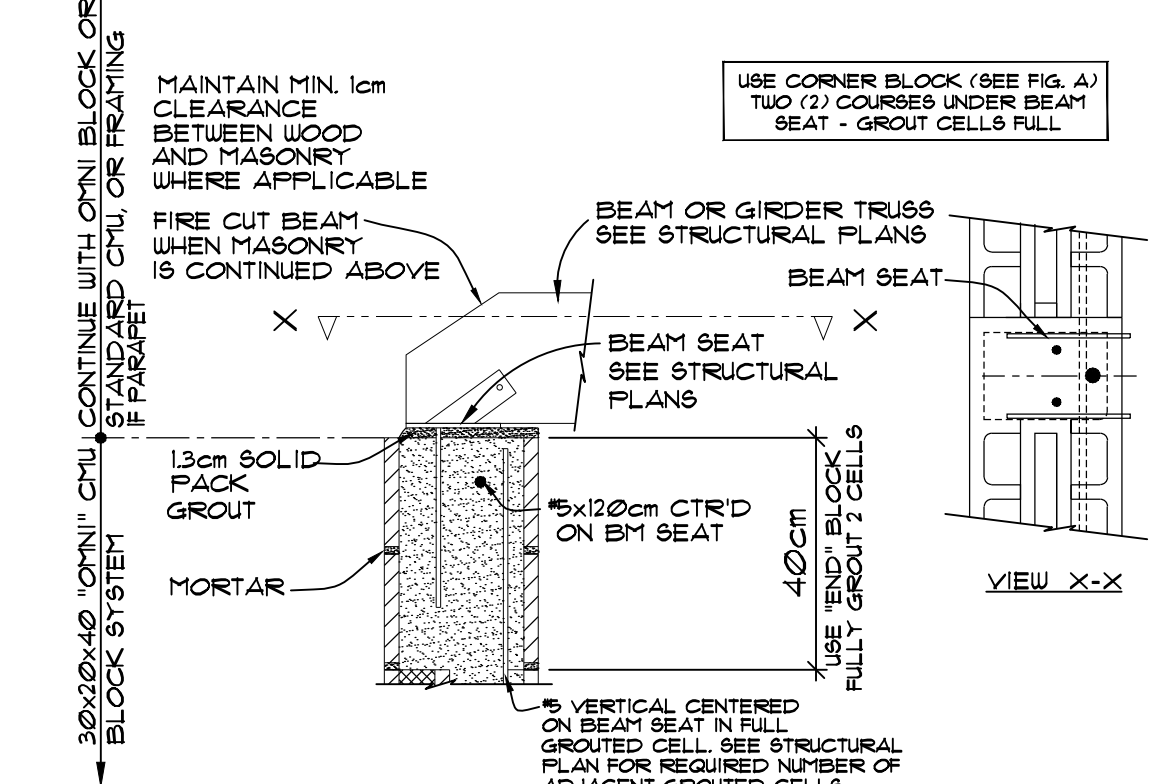
Mark	LINTEL SPECIFICATIONS					FIGURE (LETTER)
	TYPE	SHEAR STEEL	TOP STEEL	GROUT WIDTH		



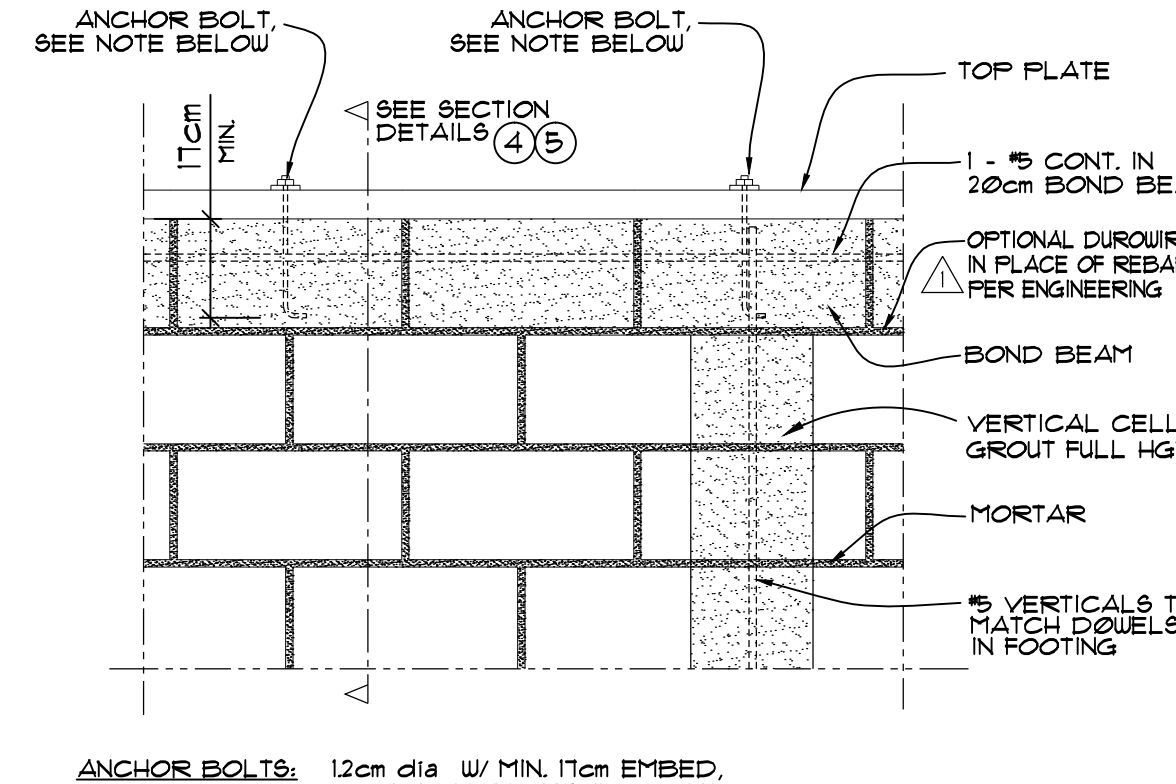
4 BOND BEAM - WITH ROOF TRUSS @ EAVE SCALE: NTS



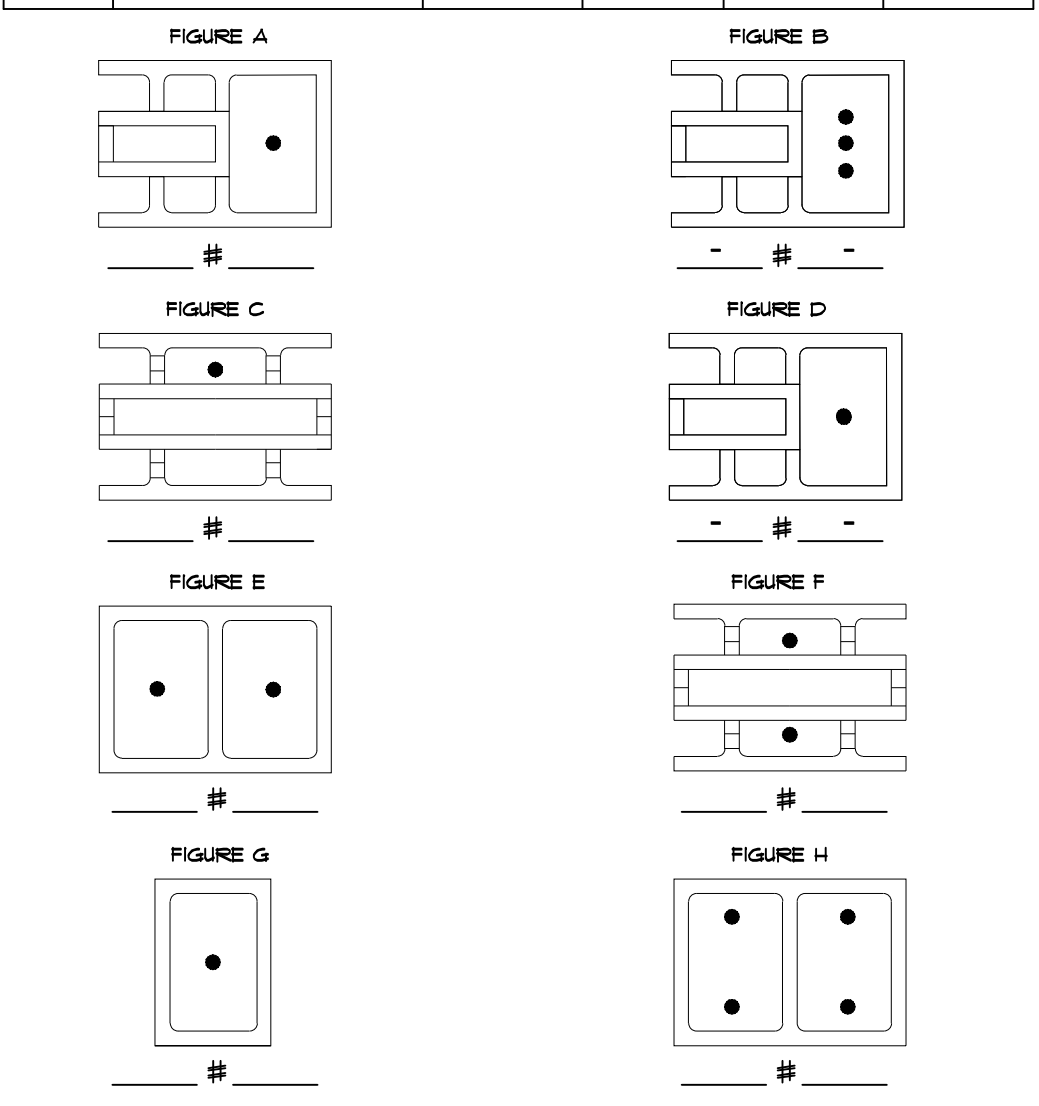
5 BOND BEAM - WITH ROOF TRUSS PARAPET SCALE: NTS



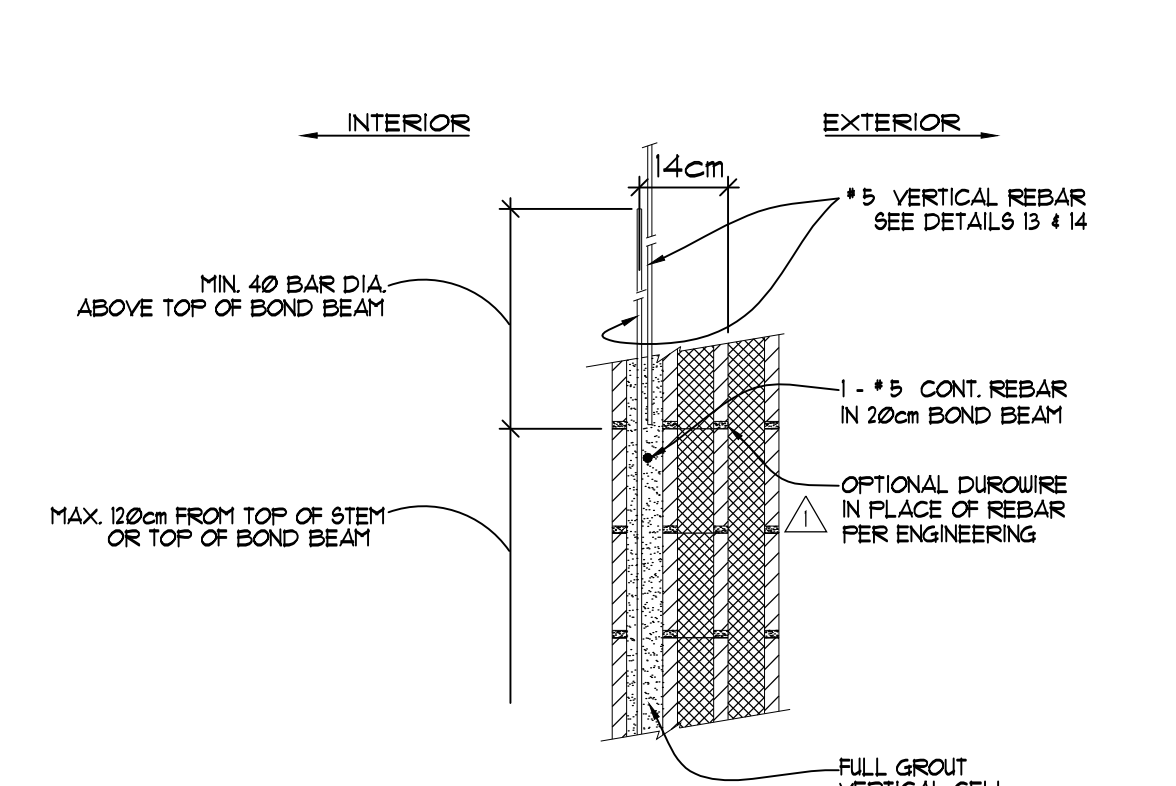
6 BEAM OR TRUSS @ CMU SCALE: NTS



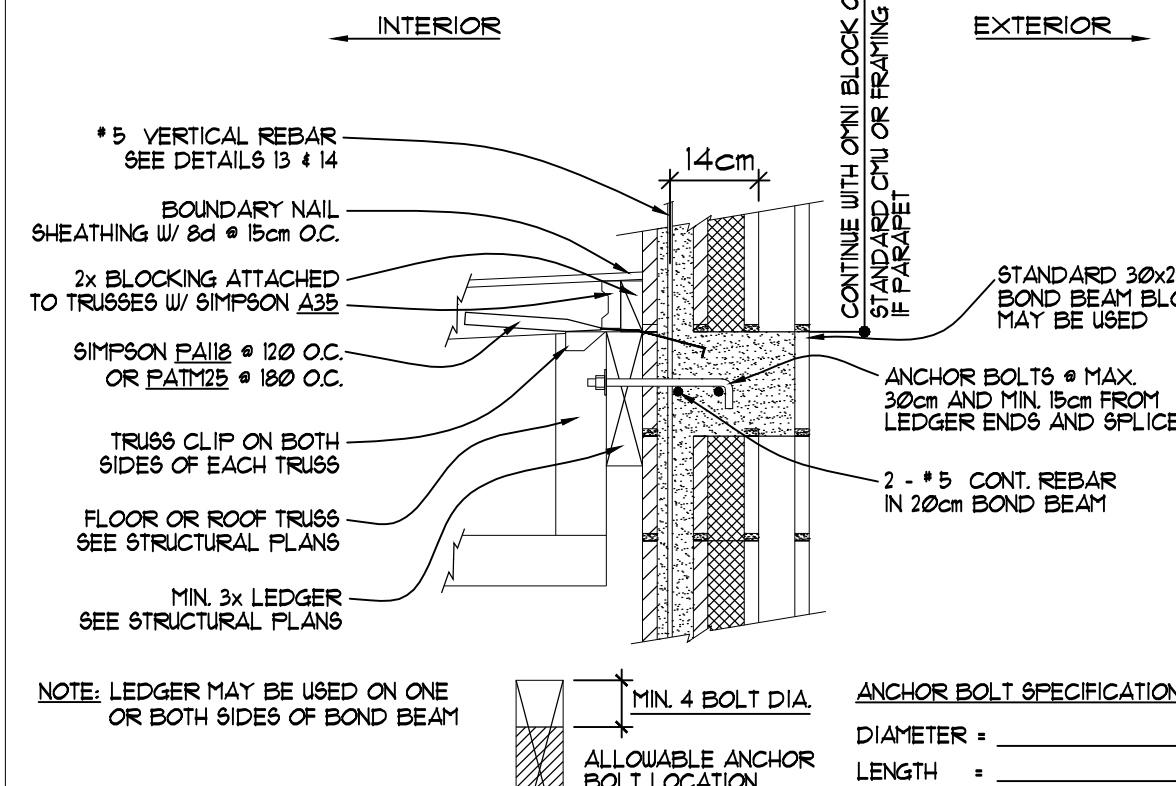
7 WALL TO ROOF / ANCHOR PLATE SCALE: NTS



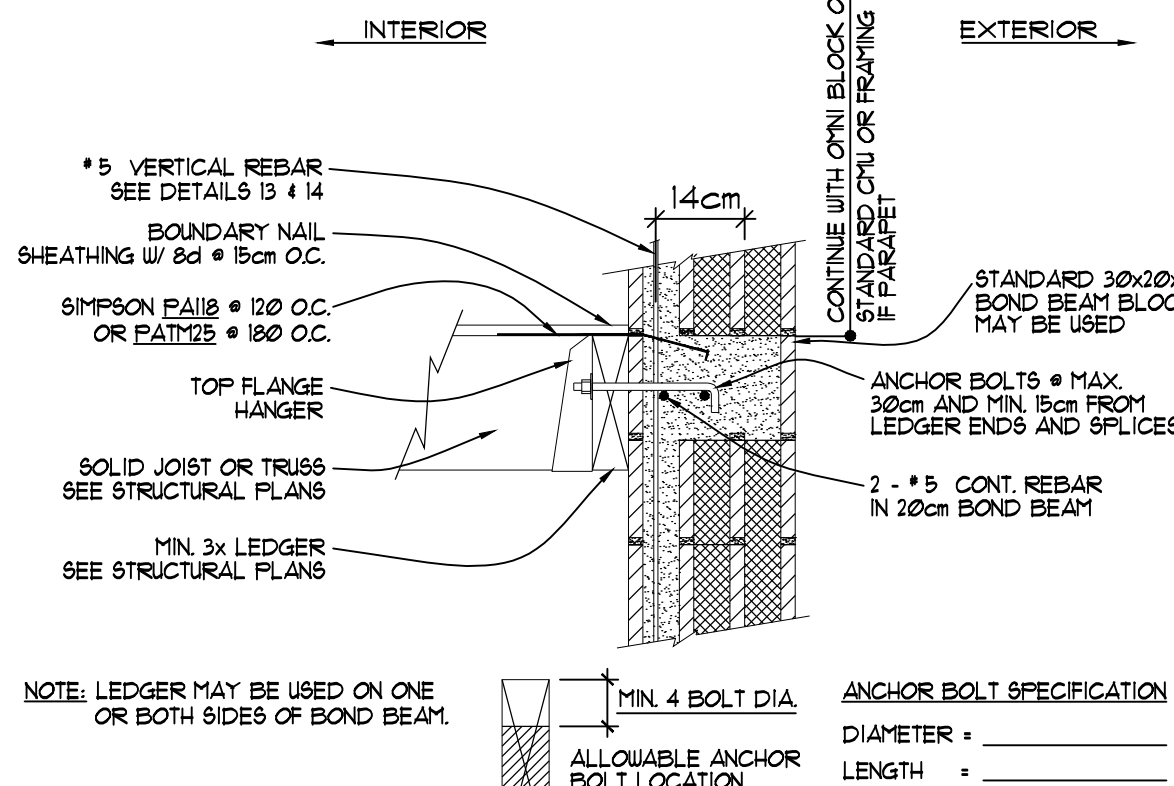
16 UNLESS NOTED OTHERWISE, ALL CMU ARE 'OMNI' SYSTEM. VERIFY ALL DETAILS AGAINST ENGINEERING CALCULATIONS. SCALE: NTS



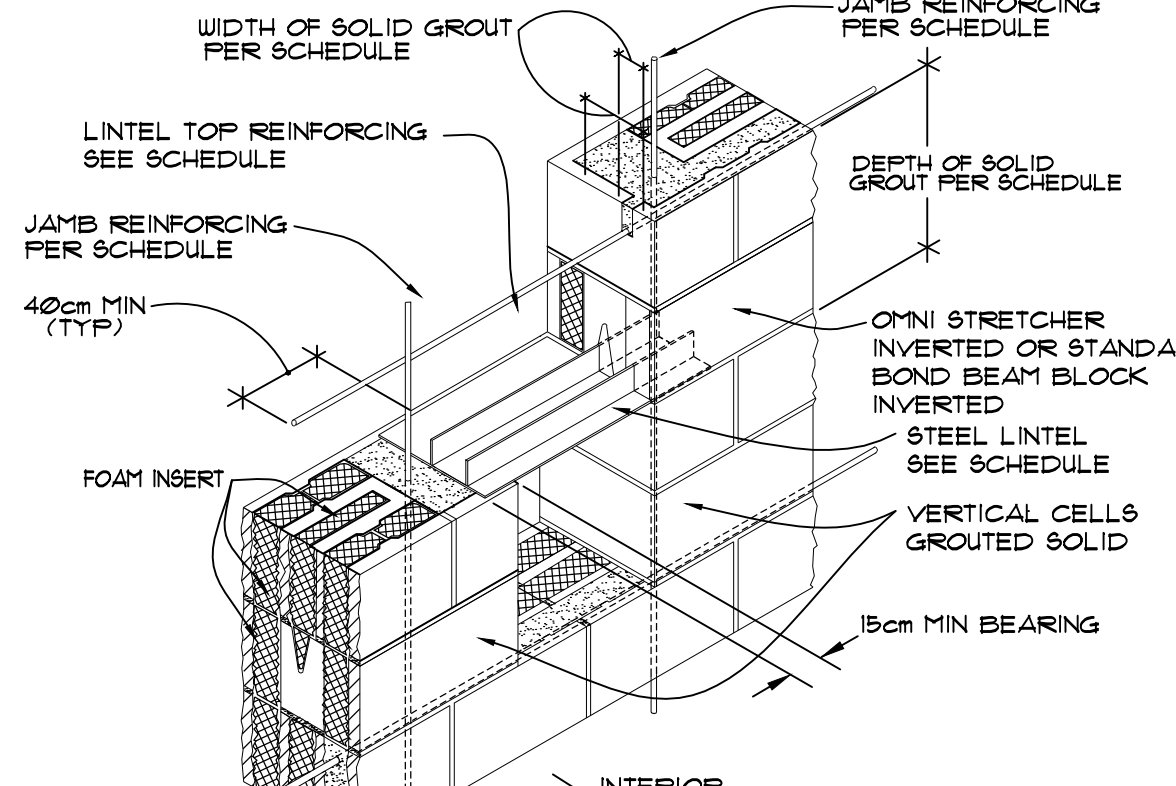
8 BOND BEAM - MID WALL SCALE: NTS



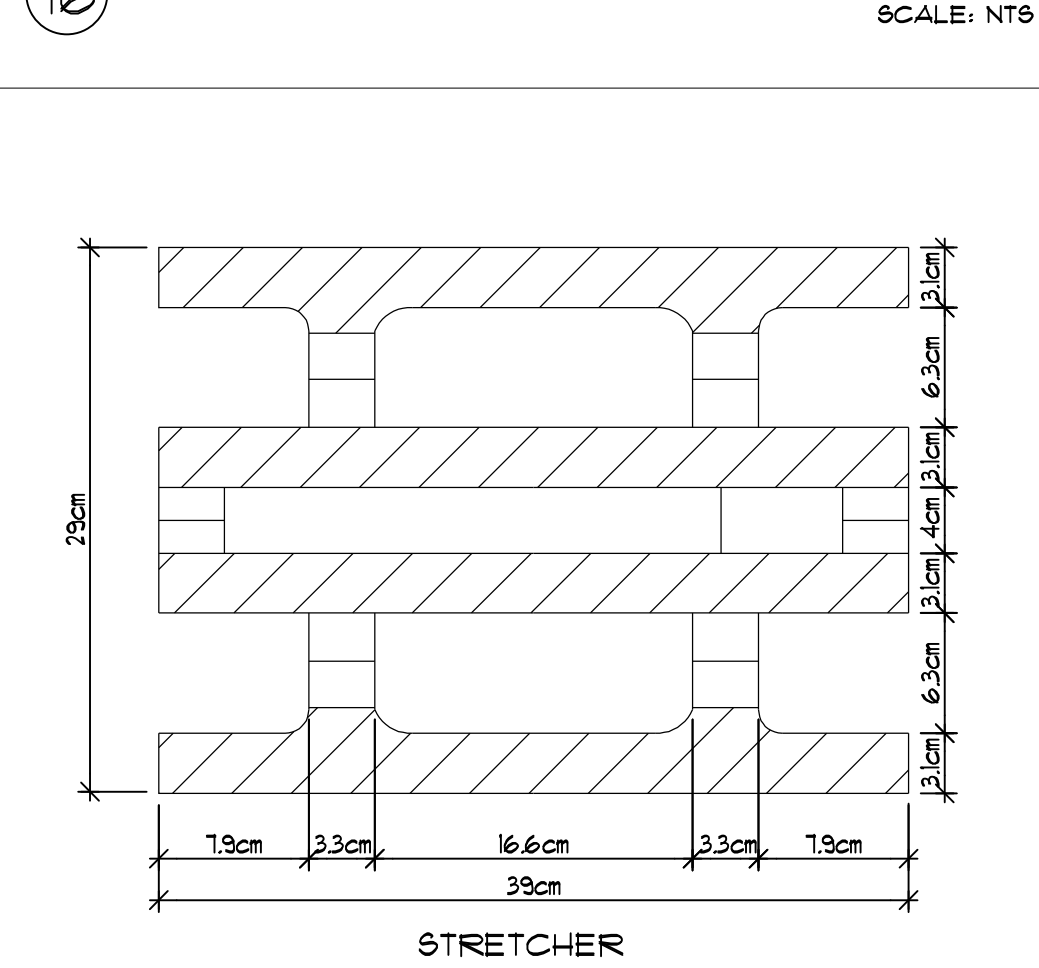
9 LOAD BEARING LEDGER WITH TRUSS TOP CHORD SUPPORT SCALE: NTS



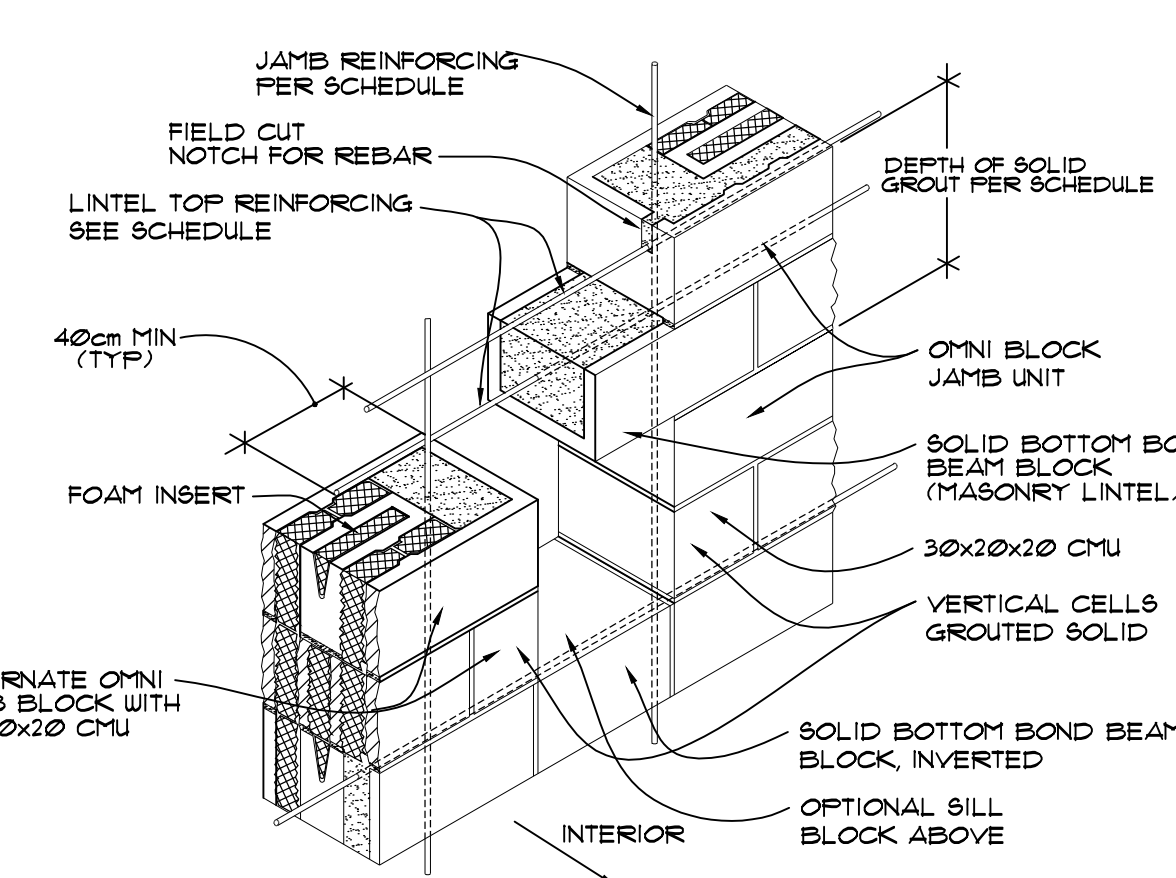
10 LOAD BEARING LEDGER WITH JOIST HANGER SCALE: NTS



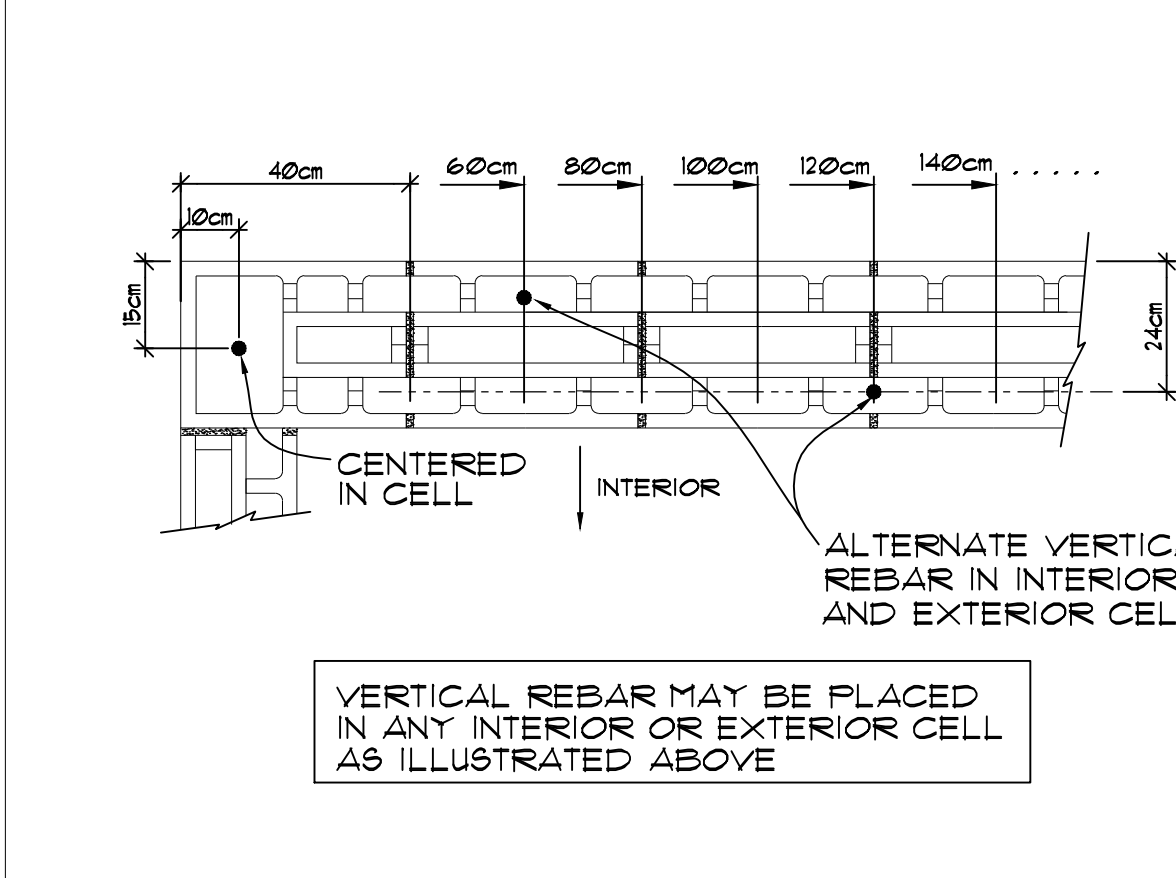
11 WINDOW / DOOR LINTEL DETAIL SCALE: NTS



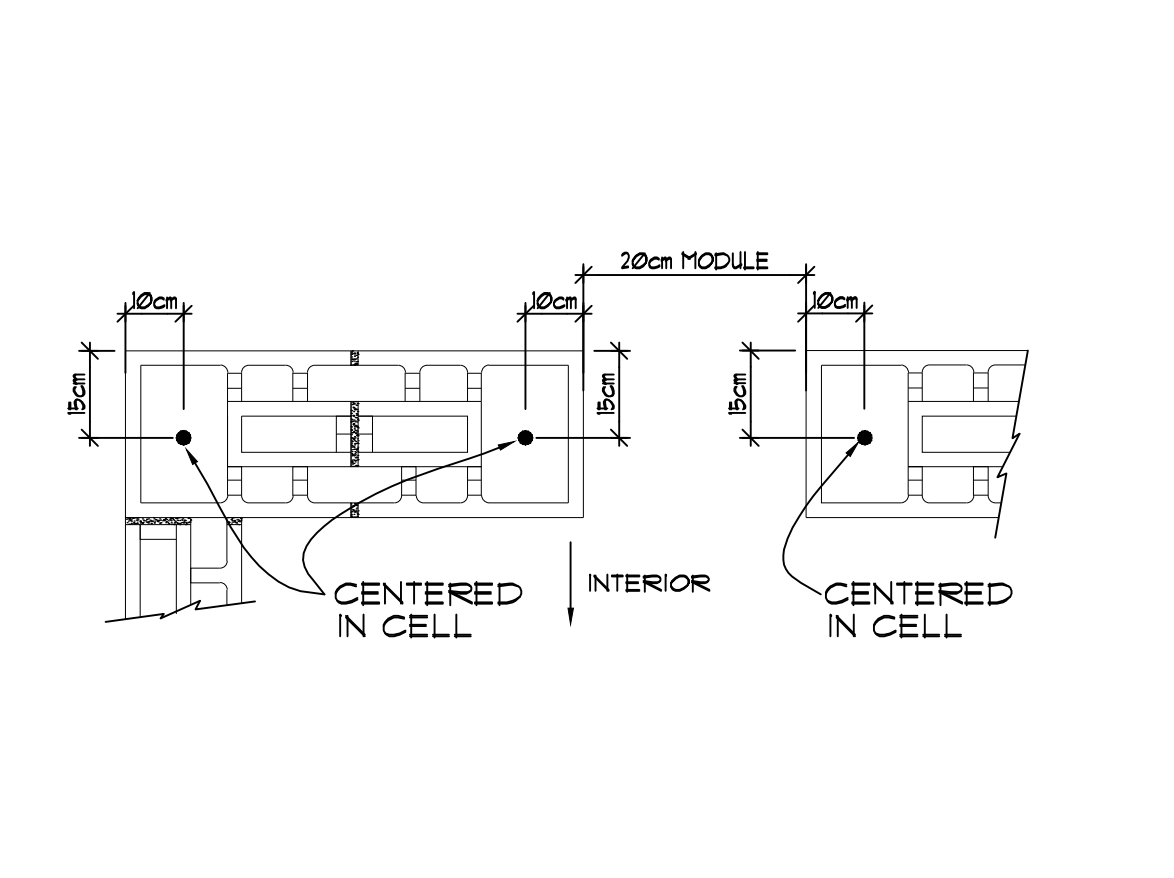
17 BLOCK DETAIL NTS



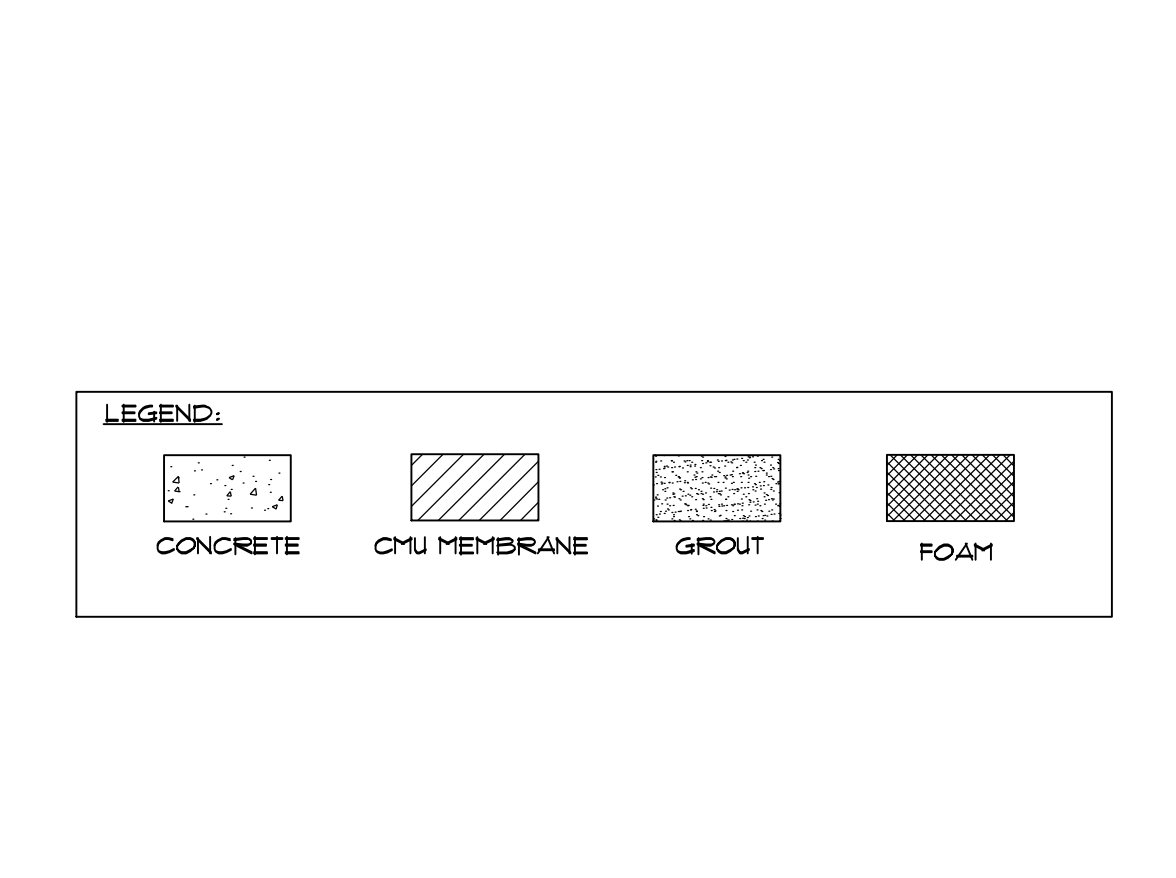
12 WINDOW/DOOR SILL AND LINTEL FOR EXPOSED CMU SCALE: NTS



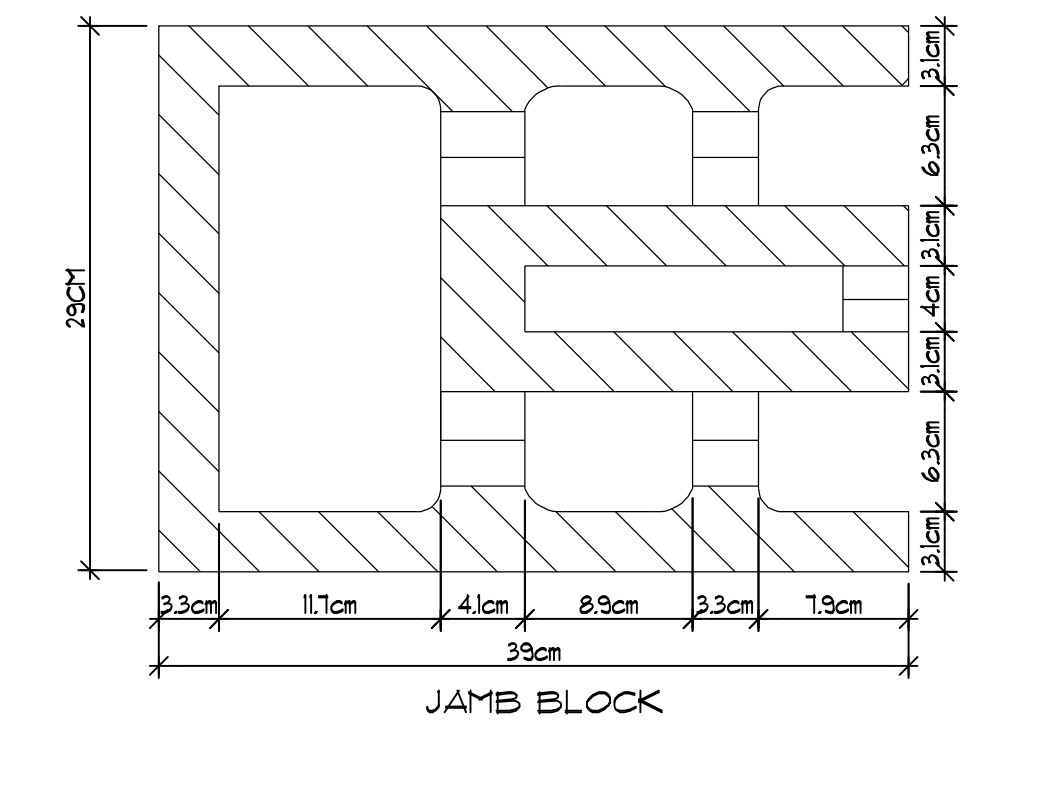
13 REBAR PLACEMENT - STANDARD WALL SCALE: NTS



14 REBAR PLACEMENT AT WINDOW & DOOR OPENINGS SCALE: NTS



15 LEGEND SCALE: NTS



17 BLOCK DETAIL NTS

Omni Block
AN INSULATED CONCRETE BLOCK

WWW.OMNIBLOCK.COM
5940 S. Rainbow Blvd #1003, Las Vegas, NV 89118
Tel/Fax: (811) 711-OMNI (6664)
info@omniblock.com

OMNI BLOCK 12
STANDARD 30cmx20cmx40cm
DESIGN DETAILS
V. 12.3

REVISIONS:

NO.	DESCRIPTION	BY:

BY: JR
CHECKED BY: DRM
DATE: 11/03/15
FILE:
SHEET
S12.3