

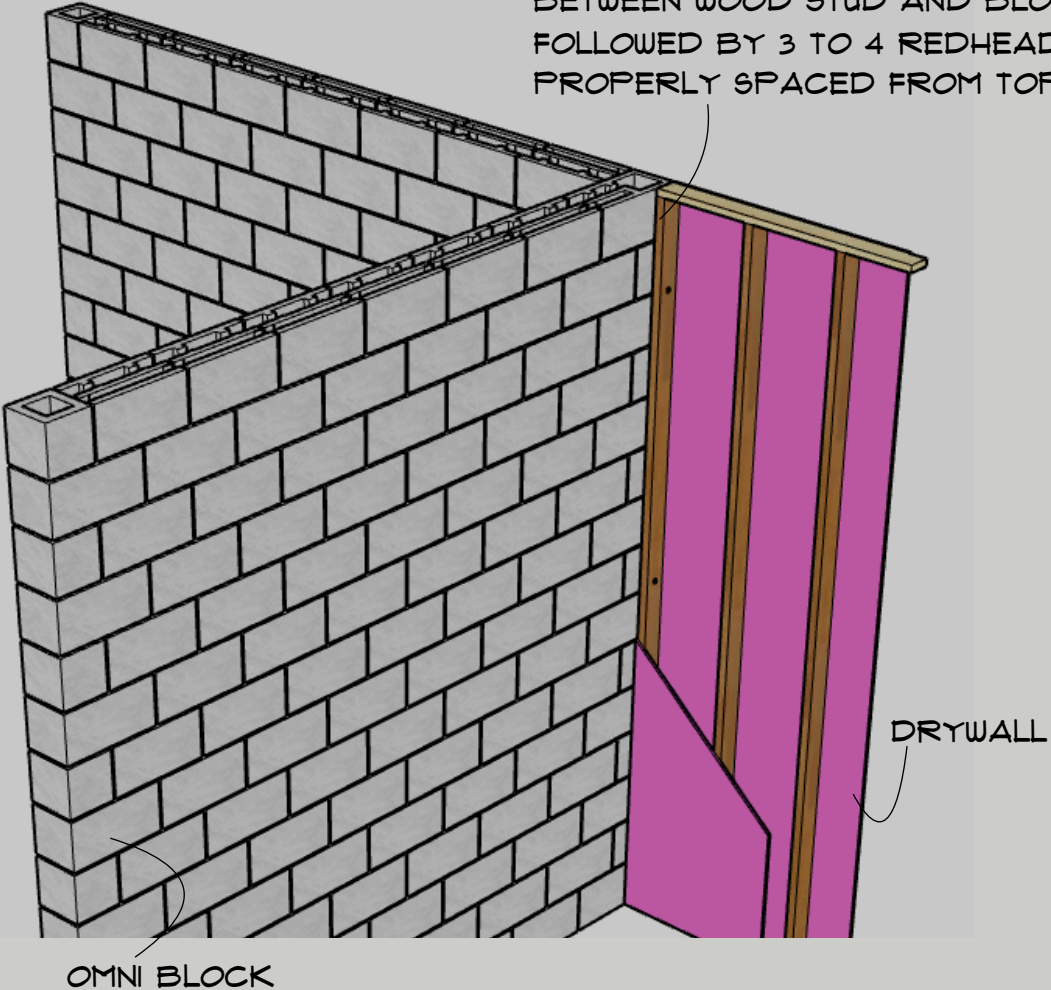
DATE: 11-25-18
REVISION: 11-16-20

PAGE: 1

BLOCK - TO - WOOD TRANSITION
OVERVIEW

OmniBlock
AN INSULATED CONCRETE BLOCK

TO ELIMINATE POTENTIAL MOVEMENT, APPLY
A BEAD OF CONSTRUCTION ADHESIVE
BETWEEN WOOD STUD AND BLOCK WALL
FOLLOWED BY 3 TO 4 REDHEADS (OR EQUAL)
PROPERLY SPACED FROM TOP TO BOTTOM

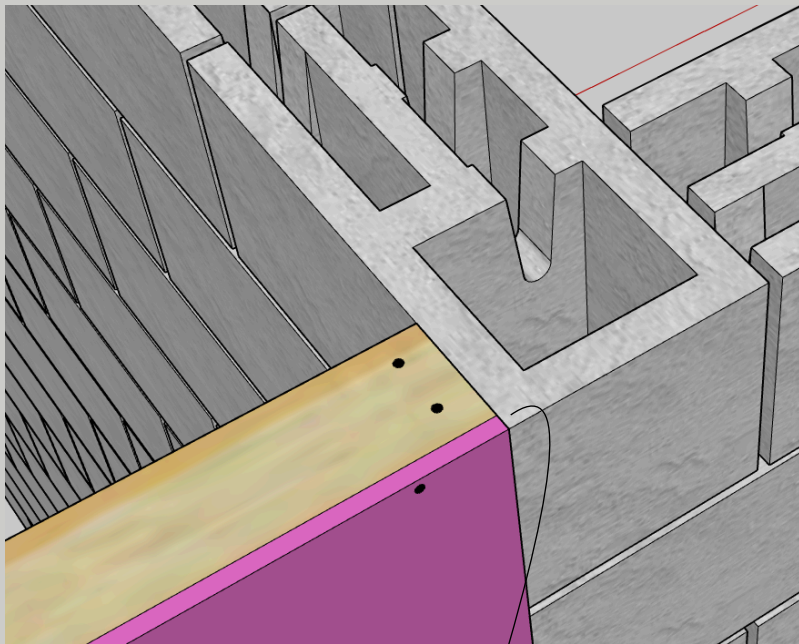


DATE: 11-25-18
REVISION: 11-16-20

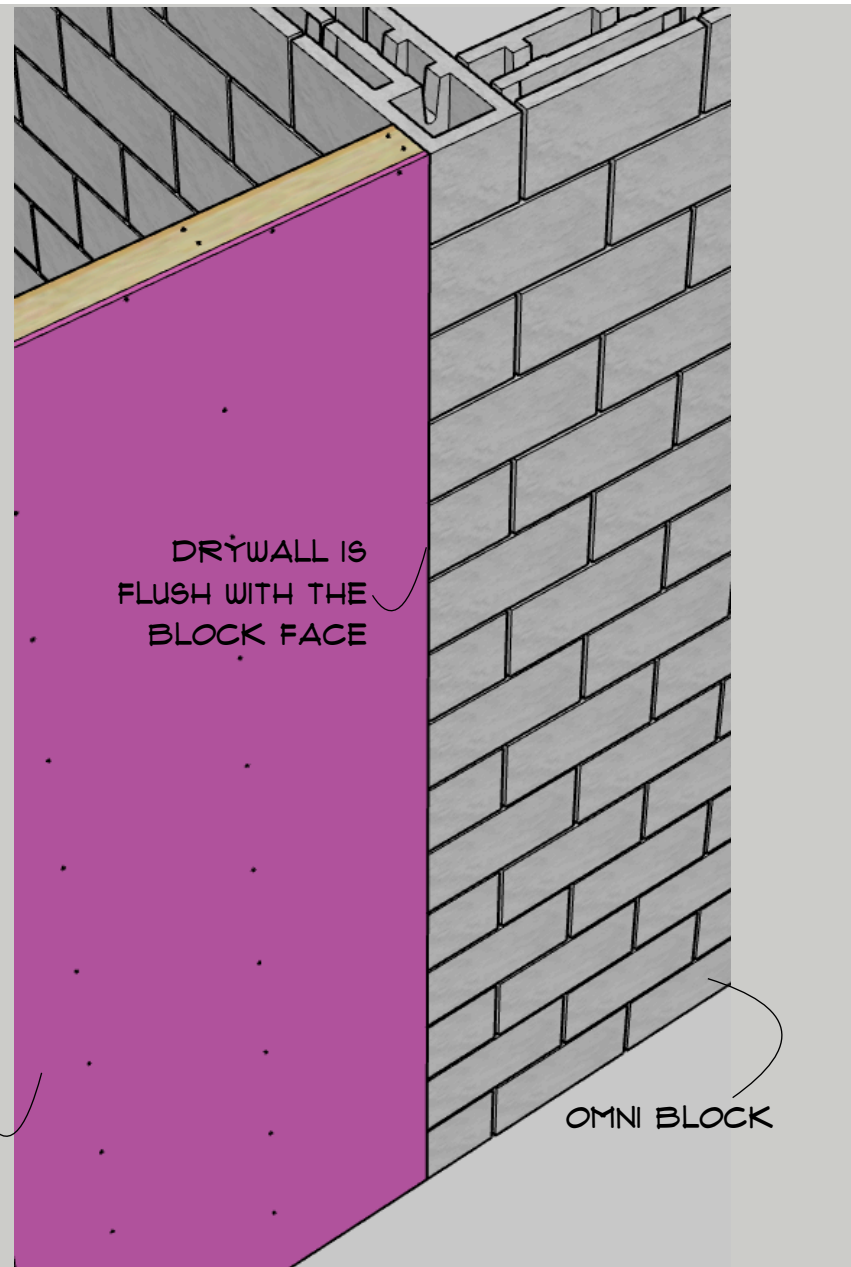
PAGE: 2

BLOCK - TO - WOOD TRANSITION
INSIDE CORNER





HOLD BACK
WOOD WALL FROM
THE FACE OF THE
BLOCK THE
THICKNESS (1/2"
OR 5/8") OF THE
DRYWALL



DRYWALL IS
FLUSH WITH THE
BLOCK FACE

DRYWALL

OMNI BLOCK

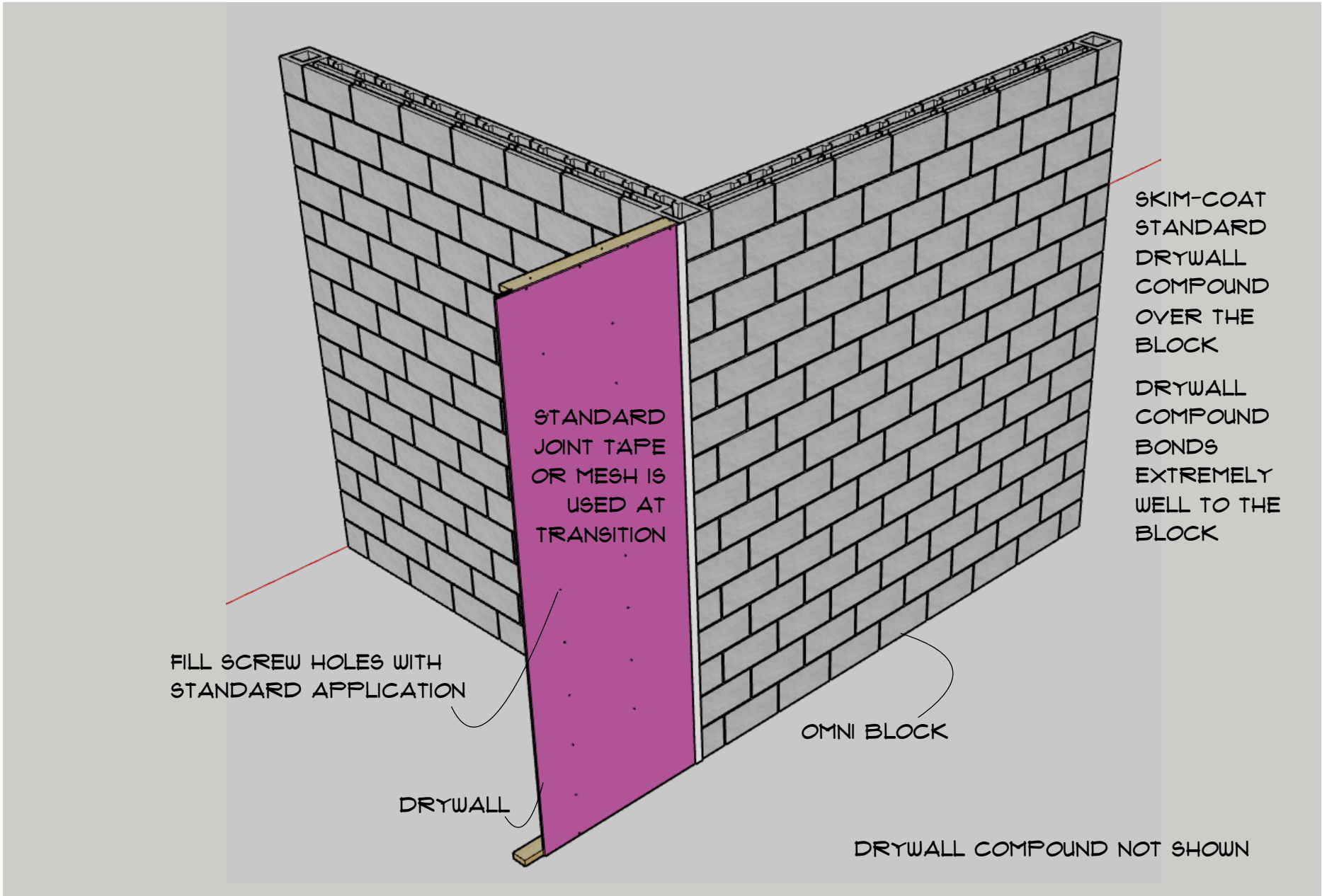
DATE: 11-25-18

PAGE: 3

BLOCK - TO - WOOD TRANSITION
OUTSIDE CORNER DETAIL

REVISION: 11-16-20



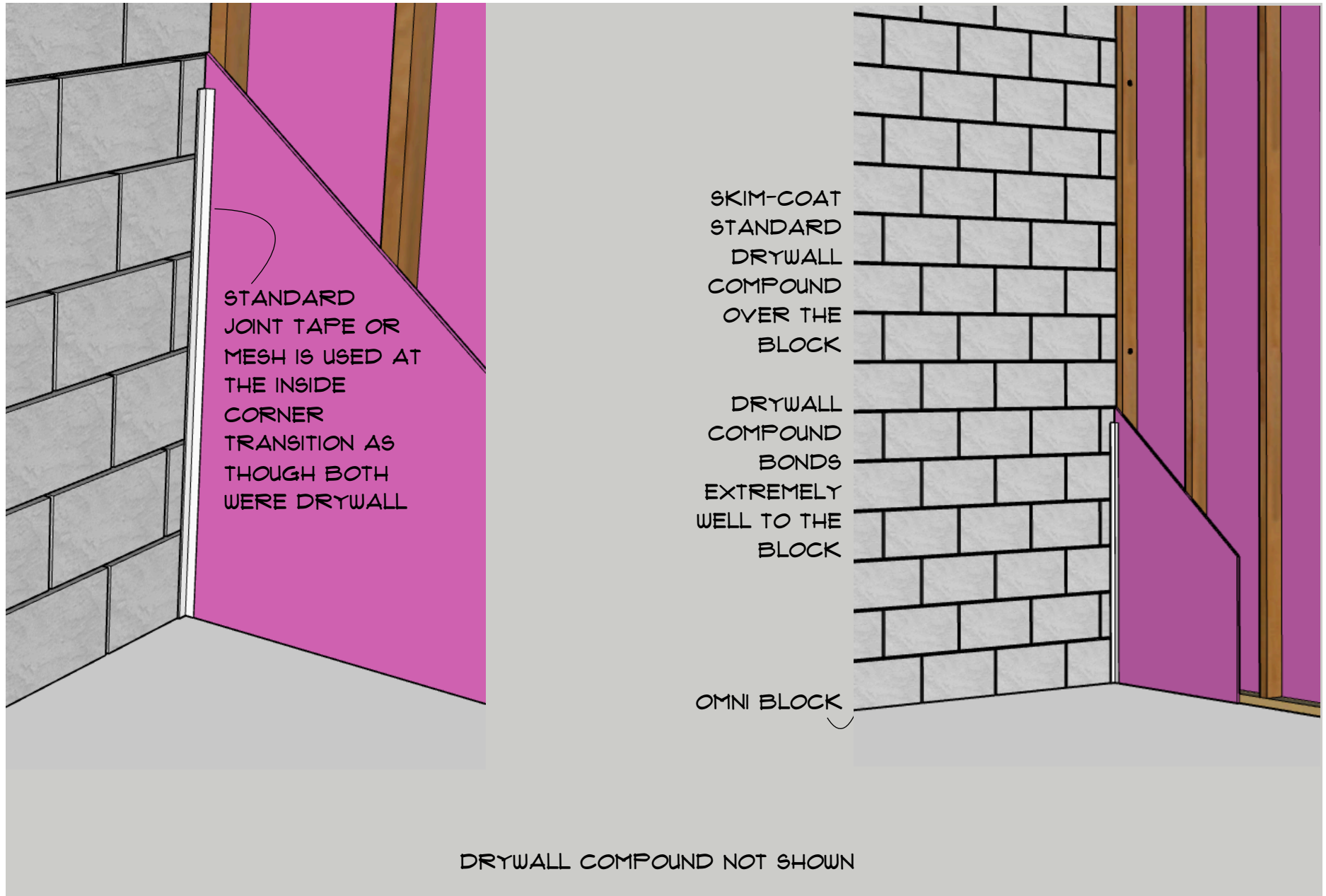


DATE: 11-25-18
REVISION: 11-16-20

PAGE: 4

BLOCK - TO - WOOD TRANSITION
OUTSIDE CORNER DETAIL





DATE: 11-25-18
 REVISION: 11-16-20

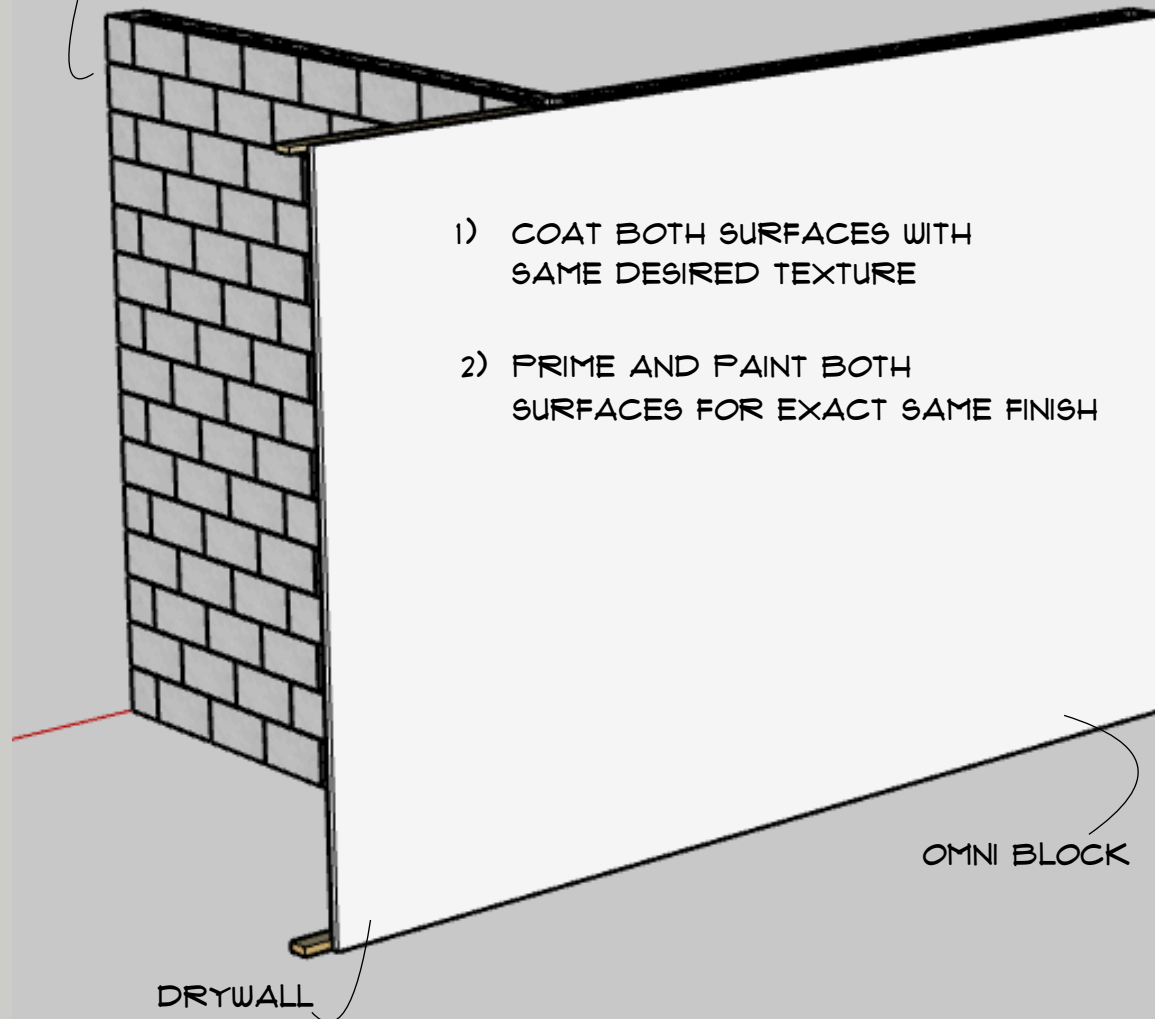
PAGE: 5

BLOCK - TO - WOOD TRANSITION
 INSIDE CORNER DETAIL



ALL OTHER OMNI BLOCK WALLS
FINISHED THE SAME, IF DESIRED

ANY TEXTURE THAT CAN BE
APPLIED OYRE DRYWALL CAN
BE APPLIED OVER OMNI BLOCK



DATE: 11-25-18

PAGE: 6

BLOCK - TO - WOOD TRANSITION
SEAMLESS FINISH

REVISION: 11-16-20

OmniBlock
AN INSULATED CONCRETE BLOCK